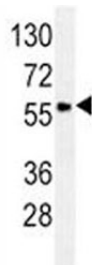


GCET1 / SERPINA9 Antibody [clone 136CT29.7.4] (F40214)

Catalog No.	Formulation	Size
F40214-0.4ML	In 1X PBS, pH 7.4, with 0.09% sodium azide	0.4 ml
F40214-0.08ML	In 1X PBS, pH 7.4, with 0.09% sodium azide	0.08 ml

[Bulk quote request](#)

Availability	1-3 business days
Species Reactivity	Human
Format	Purified
Host	Mouse
Clonality	Monoclonal (mouse origin)
Isotype	Mouse IgM, k
Clone Name	136CT29.7.4
Purity	Purified
UniProt	Q86WD7
Applications	Western Blot : 1:100-1:500
Limitations	This GCET1/SERPINA9 antibody is available for research use only.



GCET1/SERPINA9 antibody western blot analysis in Ramos lysate.

Description

GCET1/SERPINA9 is a protease inhibitor that inhibits trypsin and trypsin-like serine proteases (in vitro). Inhibits plasmin and thrombin with lower efficiency (in vitro).[UniProt]

Application Notes

Titration of the GCET1/SERPINA9 antibody may be required due to differences in protocols and secondary/substrate

sensitivity.

Immunogen

A portion of amino acids 158-186 from the human protein was used as the immunogen for this GCET1/SERPINA9 antibody.

Storage

Aliquot the GCET1/SERPINA9 antibody and store frozen at -20oC or colder. Avoid repeated freeze-thaw cycles.