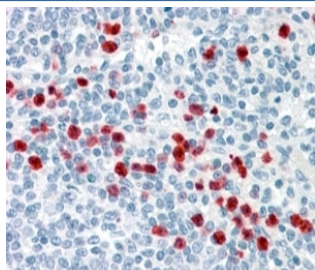


GCC2 Antibody (R35331)

Catalog No.	Formulation	Size
R35331-100UG	0.5 mg/ml in 1X TBS, pH7.3, with 0.5% BSA (US sourced) and 0.02% sodium azide	100 ug

[Bulk quote request](#)

Availability	1-3 business days
Species Reactivity	Human
Predicted Reactivity	Rat
Format	Antigen affinity purified
Host	Goat
Clonality	Polyclonal (goat origin)
Isotype	Goat Ig
Purity	Antigen affinity
Gene ID	9648
Applications	Immunohistochemistry (FFPE) : 3-6ug/ml ELISA (peptide) LOD : 1:16000
Limitations	This GCC2 antibody is available for research use only.



IHC testing of FFPE human spleen with GCC2 antibody at 4ug/ml. HIER: steamed with pH6 citrate buffer, AP-staining.

Description

Additional name(s) for this target protein: GRIP and coiled-coil domain containing 2

Application Notes

Optimal dilution of the GCC2 antibody should be determined by the researcher.

Immunogen

Amino acids QKLTNKNNKIED were used as the immunogen for this GCC2 antibody.

Storage

Aliquot and store the GCC2 antibody at -20oC.