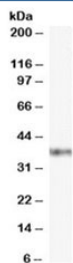


GBX2 Antibody (R35273)

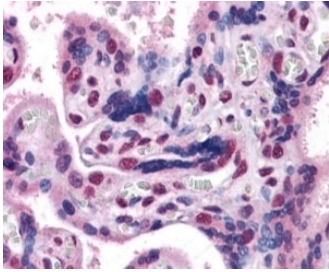
Catalog No.	Formulation	Size
R35273-100UG	0.5 mg/ml in 1X TBS, pH7.3, with 0.5% BSA (US sourced) and 0.02% sodium azide	100 ug

[Bulk quote request](#)

Availability	1-3 business days
Species Reactivity	Human
Predicted Reactivity	Cow, Dog, Mouse, Pig, Rat
Format	Antigen affinity purified
Host	Goat
Clonality	Polyclonal (goat origin)
Isotype	Goat Ig
Purity	Antigen affinity
Gene ID	2637
Applications	Western Blot : 0.1-0.3ug/ml Immunohistochemistry (FFPE) : 4-8ug/ml ELISA (peptide) LOD : 1:16000
Limitations	This GBX2 antibody is available for research use only.



Western blot testing of Jurkat cell lysate with GBX2 antibody at 0.1ug/ml. Predicted molecular weight ~37kDa.



IHC staining of FFPE human placenta with GBX2 antibody at 3.8ug/ml. HIER: steamed with pH6 citrate buffer, AP-staining. Nuclear staining of trophoblasts is seen.

Description

Additional name(s) for this target protein: Gastrulation brain homeobox 2

Application Notes

Optimal dilution of the GBX2 antibody should be determined by the researcher.

Immunogen

Amino acids QGKDESKVEDDPK were used as the immunogen for this GBX2 antibody.

Storage

Aliquot and store the GBX2 antibody at -20oC.