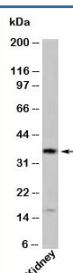


GBL Antibody / G protein beta subunit-like / GbetaL (N1215)

Catalog No.	Formulation	Size
N1215-100UG	0.5 mg/ml in 1X PBS with 0.1 mg/ml BSA (US sourced), 0.05% sodium azide	100 ug
N1215-25UG	0.5 mg/ml in 1X PBS with 0.1 mg/ml BSA (US sourced), 0.05% sodium azide	25 ug

[Bulk quote request](#)

Species Reactivity	Human, Mouse, Rat
Format	Purified
Clonality	Polyclonal (rabbit origin)
Isotype	Rabbit IgG
Purity	Protein A affinity chromatography
Buffer	1X PBS, pH 7.4
Gene ID	64223
Applications	Western Blot : 1-3ug/ml
Limitations	This GBL antibody is available for research use only.



Western blot testing of human samples with GBL antibody at 1ug/ml.

Description

GBL (G protein beta subunit-like), also called MLST8 (MTOR associated protein, LST8 homolog), is a subunit of the mTOR signaling complexes mTORC1 and mTORC2, which help regulate cell growth and survival in response to growth factor (mTORC1 & 2) and nutrient (mTORC1) signaling. It is required for the phosphorylation of S6 kinase and the signal adaptor protein Insulin receptor substrate 1 and S473 phosphorylation of AKT. GBL is also a regulator of TNF α -induced NF- κ B activity, with overexpression inhibiting and down-regulation enhancing NF- κ B signaling (Kim et al, 2008).

Application Notes

Provided assay concentrations are suggestions only, GBL antibody titration may be required for optimal results.

Immunogen

A recombinant protein fragment from the internal region of human GBL was used as the immunogen for this antibody.

Storage

Aliquot the GBL antibody and store frozen at -20oC or colder. Avoid repeated freeze-thaw cycles.

Alternate Names

G protein beta subunit-like, LST8, MLST8 antibody

References (1)