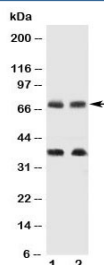


## GAT-1 Antibody / GABA Transporter 1 / SLC6A1 (C-Terminal Region) (R30811)

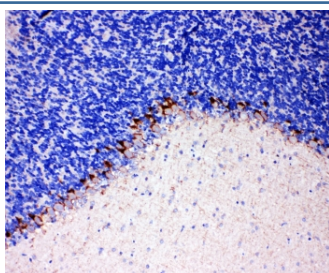
Catalog No.	Formulation	Size
R30811	0.5mg/ml if reconstituted with 0.2ml sterile DI water	100 ug

[Bulk quote request](#)

Availability	1-3 business days
Species Reactivity	Human, Mouse, Rat
Format	Antigen affinity purified
Clonality	Polyclonal (rabbit origin)
Isotype	Rabbit IgG
Purity	Antigen affinity
Buffer	Lyophilized from 1X PBS with 2.5% BSA and 0.025% sodium azide/thimerosal
UniProt	P30531
Localization	Membrane
Applications	Western Blot : 0.5-1ug/ml IHC (FFPE) : 0.5-1ug/ml
Limitations	This GAT-1 antibody is available for research use only.



Western blot testing of GAT-1 antibody and Lane 1: rat brain; 2: mouse brain tissue lysate. Predicted molecular weight: 67~80 kDa depending on level of glycosylation. The ~35 kDa band is uncharacterized.



IHC-P: GAT-1 antibody testing of rat brain tissue

## Description

SLC6A1 (Solute Carrier family 6 (Neurotransmitter transporter, Gaba), Member 1), also called GABATR, GABATHG and GAT-1, encodes a gamma-aminobutyric acid (GABA) transporter, which removes GABA from the synaptic cleft. Zomot et al.(2007) showed that introduction of a negatively charged amino acid at or near one of the two putative sodium binding sites of GAT-1 from rat brain renders both net flux and exchange of GABA largely chloride independent. By in vitro functional expression studies, the GAT-1 insertion promoter (two copies of the sequence) had significantly greater promoter activity than the noninsertion (one copy of the sequence) promoter, which in turn had greater activity than a promoterless control. Studies of postmortem hippocampus from 69 African American individuals showed that overall expression decreased with age.

## Application Notes

The stated application concentrations are suggested starting amounts. Titration of the GAT-1 antibody may be required due to differences in protocols and secondary/substrate sensitivity.

## Immunogen

An amino acid sequence from the C-terminus of human GABA Transporter 1 (WFYGVNRFYDNIQEM) was used as the immunogen for this GAT-1 antibody (100% homologous in human, mouse and rat).

## Storage

After reconstitution, the GAT-1 antibody can be stored for up to one month at 4oC. For long-term, aliquot and store at -20oC. Avoid repeated freezing and thawing.