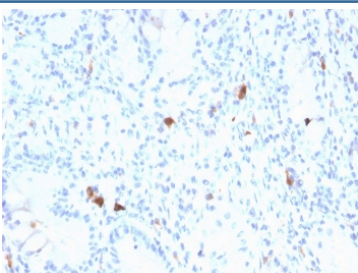


Gastrin Antibody / Gastrointestinal Hormone Marker Antibody [clone GAST/2634] (V7797)

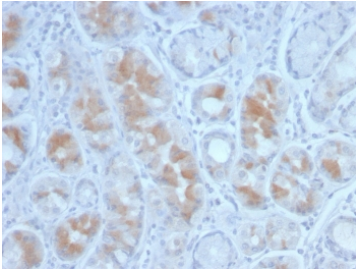
Catalog No.	Formulation	Size
V7797-100UG	0.2 mg/ml in 1X PBS with 0.1 mg/ml BSA (US sourced) and 0.05% sodium azide	100 ug
V7797-20UG	0.2 mg/ml in 1X PBS with 0.1 mg/ml BSA (US sourced) and 0.05% sodium azide	20 ug
V7797SAF-100UG	1 mg/ml in 1X PBS; BSA free, sodium azide free	100 ug

Bulk quote request

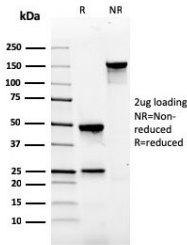
Availability	1-3 business days
Species Reactivity	Human
Format	Purified
Host	Mouse
Clonality	Monoclonal (mouse origin)
Isotype	Mouse IgG1, kappa
Clone Name	GAST/2634
Purity	Protein G affinity chromatography
UniProt	P01350
Localization	Cytoplasmic, secreted
Applications	Immunohistochemistry : 1-2ug/ml
Limitations	This Gastrin Antibody / Gastrointestinal Hormone Marker Antibody is available for research use only.



Gastrin Antibody Stomach IHC. Immunohistochemistry analysis of FFPE human stomach tissue stained with Gastrin Antibody demonstrates sparse cytoplasmic HRP-DAB brown staining within scattered gastrointestinal endocrine-associated cellular populations distributed throughout gastric glandular structures. This gastrointestinal hormone marker antibody highlights Gastrin / GAST-expressing neuroendocrine cells involved in gastric acid regulatory signaling and digestive peptide hormone-associated pathways. HIER: boil tissue sections in pH 9 10mM Tris with 1mM EDTA for 20 min and allow to cool before testing.



Gastrin Antibody Human Stomach Tissue IHC. Immunohistochemistry analysis of FFPE human stomach tissue stained with Gastrin Antibody demonstrates granular cytoplasmic HRP-DAB brown staining within gastric gland-associated epithelial endocrine cell populations, consistent with expression of Gastrin / GAST in hormone-secreting gastrointestinal cellular compartments. This gastrointestinal hormone marker antibody highlights peptide hormone-associated secretory pathways and gastric neuroendocrine differentiation within stomach tissue. HIER: boil tissue sections in pH 9 10mM Tris with 1mM EDTA for 20 min and allow to cool before testing.



SDS-PAGE analysis of purified, BSA-free Gastrin antibody (clone GAST/2634) as confirmation of integrity and purity.

Description

Gastrin (GAST) is a peptide hormone produced primarily by gastric G cells within the antral mucosa of the stomach, where it functions as a central regulator of gastric acid secretion, gastrointestinal mucosal growth, and digestive signaling pathways. Gastrin stimulates acid production through activation of enterochromaffin-like cells and parietal cells while also contributing to gastrointestinal epithelial maintenance and neuroendocrine-associated signaling mechanisms. Gastrin Antibody is useful for investigations involving gastrointestinal endocrine biology, gastric hormone signaling, digestive tract neuroendocrine differentiation, and gastroenteropancreatic regulatory pathways.

Gastrin antibody, also referred to as GAST antibody and Gastrin hormone antibody in the literature, recognizes a peptide hormone encoded on chromosome 17q21.32. Gastrin is synthesized as a preprohormone that undergoes proteolytic processing to generate biologically active peptide forms involved in gastric secretory regulation and gastrointestinal endocrine signaling. Expression of Gastrin is strongly associated with gastric antral G cells and subsets of neuroendocrine-associated gastrointestinal cellular populations.

Gastrin Antibody / Gastrointestinal Hormone Marker Antibody (clone GAST/2634) is uniquely positioned for studies involving gastrointestinal endocrine differentiation and gastric hormone-associated cellular identification. This mouse monoclonal antibody supports immunohistochemical detection of Gastrin in gastrointestinal epithelial and neuroendocrine-associated tissues, making clone GAST/2634 useful for investigations involving gastric endocrine cell biology, gastroenteropancreatic neuroendocrine pathways, and digestive hormone-associated tissue organization.

Gastrin signaling plays an important role in regulation of gastric acid secretion through activation of cholecystokinin B receptors and downstream histamine-mediated pathways. In addition to its physiologic role in gastric secretory activity, Gastrin contributes to gastrointestinal mucosal proliferation, epithelial maintenance, and neuroendocrine-associated regulatory signaling. Altered Gastrin expression and signaling activity have been associated with hypergastrinemia, neuroendocrine tumor biology, gastric mucosal hyperplasia, and gastrointestinal endocrine-associated disease processes.

Gastrin-producing endocrine cells are localized predominantly within gastric antral glands and demonstrate characteristic cytoplasmic secretory peptide localization in tissue-based detection systems. Gastrin-associated signaling networks interact closely with additional gastrointestinal hormones and neuroendocrine regulatory pathways involved in digestive physiology and epithelial homeostasis. Because Gastrin expression is highly associated with specialized gastrointestinal endocrine cellular populations, it serves as a useful marker for investigations involving gastric neuroendocrine differentiation and gastrointestinal peptide hormone biology.

This Gastrin Antibody supports research involving gastrointestinal endocrine signaling, gastric hormone biology, neuroendocrine differentiation pathways, digestive tract epithelial regulation, gastroenteropancreatic signaling mechanisms, and gastric secretory pathway-associated cellular regulation. Clone GAST/2634 may be incorporated into immunohistochemistry and tissue-based investigations examining gastrointestinal endocrine organization and hormone-associated cellular differentiation in normal and diseased tissues.

For additional gastrointestinal endocrine and neuroendocrine pathway markers, explore our [Cancer Antibodies](#) landing page featuring antibodies targeting peptide hormone signaling and gastroenteropancreatic differentiation pathways.

Application Notes

Optimal dilution of the Gastrin Antibody / Gastrointestinal Hormone Marker Antibody should be determined by the researcher.

Immunogen

A recombinant full-length human GAST protein was used as the immunogen for this Gastrin / GAST antibody.

Storage

Store the Gastrin / GAST antibody at 2-8oC (with azide) or aliquot and store at -20oC or colder (without azide).

Alternate Names

GAST antibody, Gastrin antibody, Gastrin hormone antibody, Gastrointestinal peptide hormone antibody, Gastric endocrine marker antibody