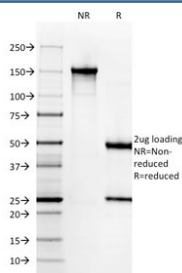


## Gastrin Antibody [clone GAST/2631] (V7861)

Catalog No.	Formulation	Size
V7861-100UG	0.2 mg/ml in 1X PBS with 0.1 mg/ml BSA (US sourced) and 0.05% sodium azide	100 ug
V7861-20UG	0.2 mg/ml in 1X PBS with 0.1 mg/ml BSA (US sourced) and 0.05% sodium azide	20 ug
V7861SAF-100UG	1 mg/ml in 1X PBS; BSA free, sodium azide free	100 ug

### Bulk quote request

<b>Availability</b>	1-3 business days
<b>Species Reactivity</b>	Human
<b>Format</b>	Purified
<b>Host</b>	Mouse
<b>Clonality</b>	Monoclonal (mouse origin)
<b>Isotype</b>	Mouse IgG2c, kappa
<b>Clone Name</b>	GAST/2631
<b>Purity</b>	Protein G affinity chromatography
<b>UniProt</b>	P01350
<b>Localization</b>	Cytoplasmic, secreted
<b>Applications</b>	ELISA (order BSA-free Format For Coating) :
<b>Limitations</b>	This Gastrin antibody is available for research use only.



SDS-PAGE analysis of purified, BSA-free Gastrin antibody (clone GAST/2631) as confirmation of integrity and purity.

## Description

Gastrin, is a hormone that normally formed by mucosal cells in the gastric antrum and by the D cells of the pancreatic islets. Its primary function is to stimulate secretion of HCl by the gastric mucosa. HCl, in turn, inhibits gastrin formation. It also responsible for stimulating smooth muscle contraction and increasing blood circulation and water secretion in the stomach and intestine. Gastrin is regulated by epidermal growth factor in both mice and humans. Gastrin is excreted in excess by pancreatic tumors in the Zollinger-Ellison syndrome. Gastrin-Releasing Peptide (GRP) stimulates the release of gastrin as well as other gastrointestinal hormones and also acts as an autocrine growth factor for certain cell types. High levels of GRP are found in the human lung just after birth and levels decrease thereafter in parallel with the observed disease in a number of pulmonary neuroendocrine cells. GRP is known to promote lung tumorigenesis in model systems.

For highly specific detection of gastrointestinal endocrine-associated Gastrin expression, see our [Gastrin Antibody / Gastrointestinal Hormone Marker Antibody](#) page featuring clone GAST/2634 for gastric neuroendocrine and peptide hormone pathway investigations.

## Application Notes

Optimal dilution of the Gastrin antibody should be determined by the researcher.

## Immunogen

A recombinant full-length human GAST protein was used as the immunogen for this Gastrin antibody.

## Storage

Store the Gastrin antibody at 2-8oC (with azide) or aliquot and store at -20oC or colder (without azide).