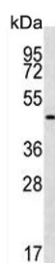


Gastric Intrinsic Factor Antibody / GIF / CBLIF (F54661)

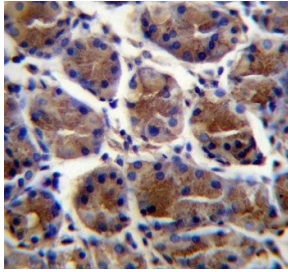
Catalog No.	Formulation	Size
F54661-0.4ML	In 1X PBS, pH 7.4, with 0.09% sodium azide	0.4 ml
F54661-0.08ML	In 1X PBS, pH 7.4, with 0.09% sodium azide	0.08 ml

[Bulk quote request](#)

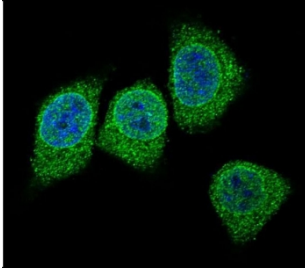
Availability	1-3 business days
Species Reactivity	Human
Format	Purified
Host	Rabbit
Clonality	Polyclonal (rabbit origin)
Isotype	Rabbit Ig
Purity	Antigen affinity purified
UniProt	P27352
Applications	Flow Cytometry : 1:25 (1x10 ⁶ cells) Immunofluorescence : 1:25 Immunohistochemistry (FFPE) : 1:25 Western Blot : 1:500-1:2000
Limitations	This Gastric Intrinsic Factor antibody is available for research use only.



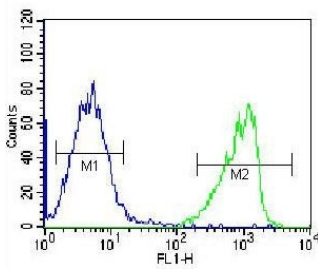
Western blot testing of human K562 cell lysate with Gastric Intrinsic Factor antibody.
Predicted molecular weight ~45 kDa.



IHC testing of FFPE human stomach tissue with Gastric Intrinsic Factor antibody. HIER: steam section in pH6 citrate buffer for 20 min and allow to cool prior to staining.



Immunofluorescent staining of human HEK293 cells with Gastric Intrinsic Factor antibody (green) and DAPI nuclear stain (blue).



Flow cytometry testing of human K562 cells with Gastric Intrinsic Factor antibody; Blue=isotype control, Green= Gastric Intrinsic Factor antibody.

Description

This gene is a member of the cobalamin transport protein family. It encodes a glycoprotein secreted by parietal cells of the gastric mucosa and is required for adequate absorption of vitamin B12. Vitamin B12 is necessary for erythrocyte maturation and mutations in this gene may lead to congenital pernicious anemia.

Application Notes

The stated application concentrations are suggested starting points. Titration of the Gastric Intrinsic Factor antibody may be required due to differences in protocols and secondary/substrate sensitivity.

Immunogen

A portion of amino acids 189-218 from the human protein was used as the immunogen for the Gastric Intrinsic Factor antibody.

Storage

Aliquot the Gastric Intrinsic Factor antibody and store frozen at -20oC or colder. Avoid repeated freeze-thaw cycles.

