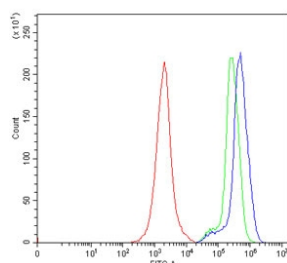


GAS2 Antibody / Growth arrest-specific protein 2 (RQ6872)

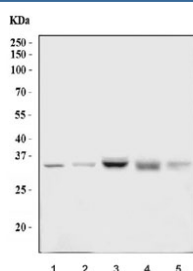
Catalog No.	Formulation	Size
RQ6872	0.5mg/ml if reconstituted with 0.2ml sterile DI water	100 ug

Bulk quote request

Availability	1-3 business days
Species Reactivity	Human, Mouse, Rat
Format	Antigen affinity purified
Host	Rabbit
Clonality	Polyclonal (rabbit origin)
Isotype	Rabbit IgG
Purity	Antigen affinity purified
Buffer	Lyophilized from 1X PBS with 2% Trehalose
UniProt	O43903
Applications	Western Blot : 1-2ug/ml Flow Cytometry : 1-3ug/million cells
Limitations	This GAS2 antibody is available for research use only.



Flow cytometry testing of human Jurkat cells with GAS2 antibody at 1ug/million cells (blocked with goat sera); Red=cells alone, Green=isotype control, Blue= GAS2 antibody.



Western blot testing of 1) human Jurkat, 2) human HepG2, 3) rat liver, 4) mouse kidney and 5) mouse liver tissue lysate with GAS2 antibody. Predicted molecular weight ~35 kDa.

Description

Growth arrest-specific protein 2 is a protein that in humans is encoded by the GAS2 gene. The protein encoded by this gene is a caspase-3 substrate that plays a role in regulating microfilament and cell shape changes during apoptosis. It can also modulate cell susceptibility to p53-dependent apoptosis by inhibiting calpain activity. Alternative splicing results in multiple transcript variants.

Application Notes

Optimal dilution of the GAS2 antibody should be determined by the researcher.

Immunogen

Amino acids HQYSQWLASRHEANLLPMKED from the human protein were used as the immunogen for the GAS2 antibody.

Storage

After reconstitution, the GAS2 antibody can be stored for up to one month at 4°C. For long-term, aliquot and store at -20°C. Avoid repeated freezing and thawing.