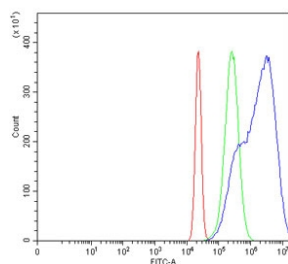


GAS1 Antibody / Growth arrest-specific protein 1 (RQ6632)

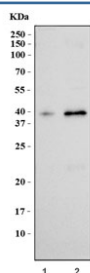
Catalog No.	Formulation	Size
RQ6632	0.5mg/ml if reconstituted with 0.2ml sterile DI water	100 ug

Bulk quote request

Availability	1-3 business days
Species Reactivity	Human
Format	Antigen affinity purified
Clonality	Polyclonal (rabbit origin)
Isotype	Rabbit IgG
Purity	Antigen affinity purified
Buffer	Lyophilized from 1X PBS with 2% Trehalose
UniProt	P54826
Applications	Western Blot : 1-2ug/ml Flow Cytometry : 1-3ug/million cells Direct ELISA : 0.1-0.5ug/ml
Limitations	This GAS1 antibody is available for research use only.



Flow cytometry testing of human HeLa cells with GAS1 antibody at 1ug/million cells (blocked with goat sera); Red=cells alone, Green=isotype control, Blue= GAS1 antibody.



Wester blot testing of human 1) HeLa and 2) HEK293 cell lysate with GAS1 antibody. Predicted molecular weight ~36 kDa but may be observed at higher molecular weights due to glycosylation.

Description

Growth arrest-specific protein 1 is a protein that in humans is encoded by the GAS1 gene. Growth arrest-specific 1 plays a role in growth suppression. GAS1 blocks entry to S phase and prevents cycling of normal and transformed cells. Gas1 is a putative tumor suppressor gene.

Application Notes

Optimal dilution of the GAS1 antibody should be determined by the researcher.

Immunogen

Recombinant human protein (amino acids L40-D288) was used as the immunogen for the GAS1 antibody.

Storage

After reconstitution, the GAS1 antibody can be stored for up to one month at 4oC. For long-term, aliquot and store at -20oC. Avoid repeated freezing and thawing.