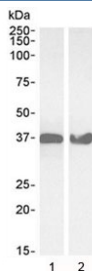


GAPDH Antibody (R34148)

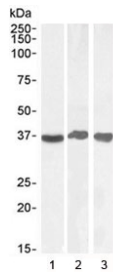
Catalog No.	Formulation	Size
R34148-100UG	0.5 mg/ml in 1X TBS, pH7.3, with 0.5% BSA (US sourced) and 0.02% sodium azide	100 ug

[Bulk quote request](#)

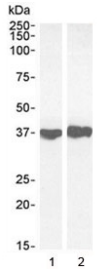
Availability	1-3 business days
Species Reactivity	Human, Mouse, Rat
Predicted Reactivity	Dog
Format	Antigen affinity purified
Host	Goat
Clonality	Polyclonal (goat origin)
Isotype	Goat Ig
Purity	Antigen affinity
Gene ID	2597
Localization	Cytoplasmic, nuclear
Applications	Western Blot : 0.1-0.3ug/ml Immunohistochemistry (FFPE) : 2-4ug/ml IF/ICC : 5ug/ml ELISA (peptide) LOD : 1:16000
Limitations	This GAPDH antibody is available for research use only.



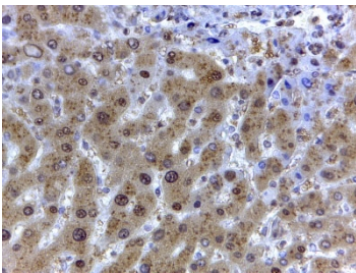
Western blot testing of 1) human HeLa and 2) mouse NIH3T3 lysate with GAPDH antibody at 0.03ug/ml. Predicted molecular weight ~36 kDa.



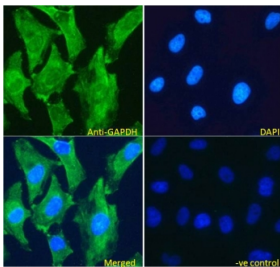
Western blot testing of human 1) liver, 2) testis and 3) tonsil lysate with GAPDH antibody at 0.1/0.03/0.03 ug/ml, respectively. Predicted molecular weight ~36 kDa.



Western blot testing of 1) mouse liver and 2) rat heart lysate with GAPDH antibody at 0.1 and 0.03 ug/ml, respectively. Predicted molecular weight ~36 kDa.



IHC staining of FFPE human liver with GAPDH antibody at 2ug/ml. HIER: steamed with pH6 citrate buffer, HRP-staining.



IF/ICC testing of fixed and permeabilized human HeLa cells with GAPDH antibody (green) at 5ug/ml and DAPI nuclear stain (blue).

Description

Additional name(s) for this target protein: Glyceraldehyde-3-phosphate dehydrogenase

Application Notes

Optimal dilution of the GAPDH antibody should be determined by the researcher.

Immunogen

Amino acids GVNHEKYDNSLK were used as the immunogen for this GAPDH antibody.

Storage

Aliquot and store the GAPDH antibody at -20oC.

