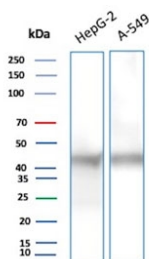


Gamma Enolase Antibody / ENO2 / NSE gamma [clone ENO2/9046] (V5452)

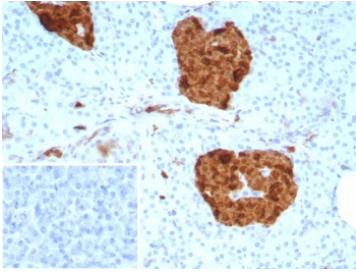
Catalog No.	Formulation	Size
V5452-100UG	0.2 mg/ml in 1X PBS with 0.1 mg/ml BSA (US sourced), 0.05% sodium azide	100 ug
V5452-20UG	0.2 mg/ml in 1X PBS with 0.1 mg/ml BSA (US sourced), 0.05% sodium azide	20 ug
V5452SAF-100UG	1 mg/ml in 1X PBS; BSA free, sodium azide free	100 ug

[Bulk quote request](#)

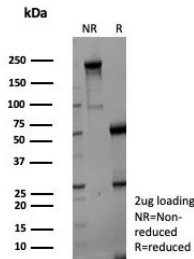
Availability	1-3 business days
Species Reactivity	Human
Format	Purified
Host	Mouse
Clonality	Monoclonal (mouse origin)
Isotype	Mouse IgG2b, kappa
Clone Name	ENO2/9046
Purity	Protein A/G affinity
UniProt	P09104
Localization	Cytoplasm
Applications	Immunohistochemistry (FFPE) : 1-2ug/ml Western Blot : 2-4ug/ml
Limitations	This Gamma Enolase antibody is available for research use only.



Gamma Enolase Antibody WB. Western blot testing of human 1) HepG2 and 2) A549 cell lysate with Gamma Enolase antibody (clone ENO2/9046). Predicted molecular weight ~47 kDa.



Gamma Enolase Antibody Human Pancreas IHC. Immunohistochemistry staining of FFPE human pancreas tissue with Gamma Enolase antibody (clone ENO2/9046). Inset: PBS used in place of primary Ab (secondary Ab negative control). HIER: boil tissue sections in pH 9 10mM Tris with 1mM EDTA for 20 min and allow to cool before testing.



SDS-PAGE analysis of purified, BSA-free Gamma Enolase antibody (clone ENO2/9046) as confirmation of integrity and purity.

Description

This monoclonal antibody recognizes a protein of about 50kDa, which is identified as gamma-enolase. Three isoenzymes of enolases are identified, alpha, beta and gamma. Alpha-isoform is expressed in most tissues, whereas beta-form is expressed predominantly in muscle tissue whereas gamma-enolase is found predominantly in nervous tissue. These isoforms exist as both homodimers and heterodimers, and they play a role in converting phosphoglyceric acid to phosphoenolpyruvic acid in the glycolytic pathway. NSE-gamma is a useful marker to identify peripheral nerves and tumors of neuro-endocrine origins, such as pheochromocytomas. It is usually employed in combination with other markers such as Synaptophysin, Chromogranin A, and Neurofilament.

For detection of neuron-specific enolase (NSE), also known as gamma enolase, across tissue types, see our [NSE antibody](#).

Application Notes

Optimal dilution of the Gamma Enolase antibody should be determined by the researcher.

Immunogen

A recombinant fragment of human NSE gamma (within amino acids 150-300) was used as the immunogen for the Gamma Enolase antibody.

Storage

Aliquot the Gamma Enolase antibody and store frozen at -20oC or colder. Avoid repeated freeze-thaw cycles.