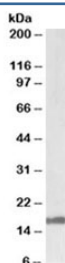


## Galanin Antibody (R34278)

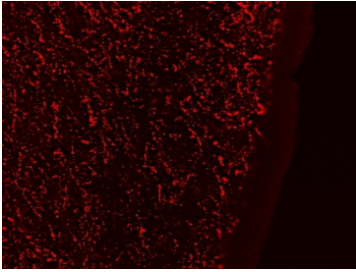
Catalog No.	Formulation	Size
R34278-100UG	0.5 mg/ml in 1X TBS, pH7.3, with 0.5% BSA (US sourced) and 0.02% sodium azide	100 ug

[Bulk quote request](#)

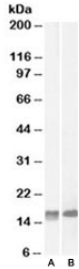
<b>Availability</b>	1-3 business days
<b>Species Reactivity</b>	Human, Mouse
<b>Predicted Reactivity</b>	Cow, Rat
<b>Format</b>	Antigen affinity purified
<b>Host</b>	Goat
<b>Clonality</b>	Polyclonal (goat origin)
<b>Isotype</b>	Goat Ig
<b>Purity</b>	Antigen affinity
<b>Gene ID</b>	51083
<b>Applications</b>	Western Blot : 1-3ug/ml Immunohistochemistry (Frozen) : 0.2-0.5ug/ml ELISA (peptide) LOD : 1:32000
<b>Limitations</b>	This Galanin antibody is available for research use only.



Western blot testing of human cerebellum lysate with Galanin antibody at 1ug/ml.  
Predicted molecular weight ~14kDa.



IHC staining of a PFA-perfused cryosection of human hypothalamus with Galanin antibody at 0.3ug/ml. HIER: pH6 citrate buffer at 80oC for 30min, Cy3-staining.



Western blot of mouse (A) and rat (B) brain lysate with Galanin antibody at 2ug/ml. Predicted molecular weight ~14kDa.

## Description

Additional name(s) for this target protein: GALN, GLNN, GMAP; GAL

## Application Notes

Optimal dilution of the Galanin antibody should be determined by the researcher.

## Immunogen

Amino acids HRSFSDKNGLTSK were used as the immunogen for this Galanin antibody.

## Storage

Aliquot and store the Galanin antibody at -20oC.