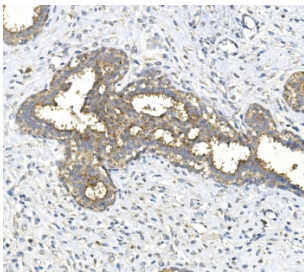


## Galactosidase alpha Antibody / Gla (RQ5728)

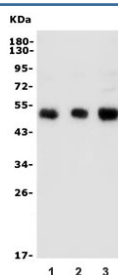
Catalog No.	Formulation	Size
RQ5728	0.5mg/ml if reconstituted with 0.2ml sterile DI water	100 ug

[Bulk quote request](#)

<b>Availability</b>	1-3 business days
<b>Species Reactivity</b>	Human
<b>Format</b>	Antigen affinity purified
<b>Host</b>	Rabbit
<b>Clonality</b>	Polyclonal (rabbit origin)
<b>Isotype</b>	Rabbit IgG
<b>Purity</b>	Affinity purified
<b>Buffer</b>	Lyophilized from 1X PBS with 2% Trehalose and 0.025% sodium azide
<b>UniProt</b>	P06280
<b>Applications</b>	Western Blot : 0.5-1ug/ml Immunohistochemistry : 1-2ug/ml
<b>Limitations</b>	This Galactosidase alpha antibody is available for research use only.



IHC staining of FFPE human breast cancer with Galactosidase alpha antibody. HIER: boil tissue sections in pH8 EDTA for 20 min and allow to cool before testing.



Western blot testing of human 1) HeLa, 2) MCF7 and 3) HEK293 lysate with Galactosidase alpha antibody. Predicted molecular weight ~48 kDa.

## Description

Alpha-galactosidase is a glycoside hydrolase enzyme that encoded by the GLA gene. This gene is a homodimeric glycoprotein that hydrolyses the terminal alpha-galactosyl moieties from glycolipids and glycoproteins. This enzyme predominantly hydrolyzes ceramide trihexoside, and it can catalyze the hydrolysis of melibiose into galactose and glucose. A variety of mutations in this gene affect the synthesis, processing, and stability of this enzyme, which causes Fabry disease, a rare lysosomal storage disorder that results from a failure to catabolize alpha-D-galactosyl glycolipid moieties.

## Application Notes

Optimal dilution of the Galactosidase alpha antibody should be determined by the researcher.

## Immunogen

Amino acids KRKLGFYEWTSRLRSHIN from the human protein were used as the immunogen for the Galactosidase alpha antibody.

## Storage

After reconstitution, the Galactosidase alpha antibody can be stored for up to one month at 4oC. For long-term, aliquot and store at -20oC. Avoid repeated freezing and thawing.