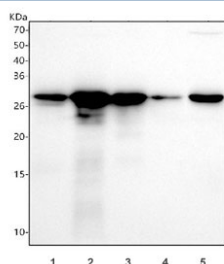


## GAL3 Antibody / Galectin 3 [clone 28L32] (RQ8278)

Catalog No.	Formulation	Size
RQ8278	Antibody in PBS with 0.02% sodium azide, 50% glycerol and 0.4-0.5mg/ml BSA	100 ul

[Bulk quote request](#)

Availability	1-3 business days
Species Reactivity	Human, Mouse
Format	Purified
Clonality	Rabbit Monoclonal
Isotype	Rabbit IgG
Clone Name	28L32
Purity	Affinity chromatography
UniProt	P17931
Applications	Western Blot : 1:500-1:2000
Limitations	This GAL3 antibody is available for research use only.



Western blot testing of 1) human A431, 2) human SiHa, 3) human RT4, 4) human MCF7 and 5) rat PC-12 cell lysate with GAL3 antibody. Expected molecular weight ~26 kDa.

### Description

Galectin 3 is a galactose-specific lectin which binds IgE.

### Application Notes

Optimal dilution of the GAL3 antibody should be determined by the researcher.

### Immunogen

A synthetic peptide derived from human Galectin 3 was used as the immunogen for the GAL3 antibody.

## Storage

Store the GAL3 antibody at -20oC.