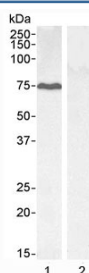


## GADD34 Antibody (R33103)

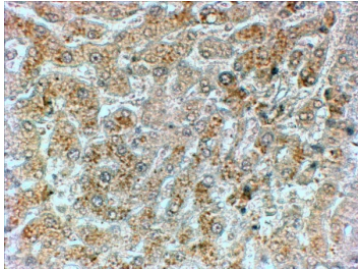
Catalog No.	Formulation	Size
R33103-100UG	0.5 mg/ml in 1X TBS, pH7.3, with 0.5% BSA (US sourced) and 0.02% sodium azide	100 ug

[Bulk quote request](#)

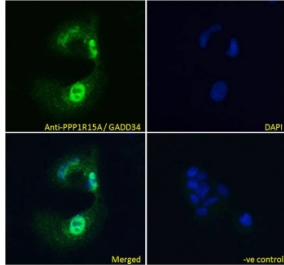
Availability	1-3 business days
Species Reactivity	Human
Format	Antigen affinity purified
Host	Goat
Clonality	Polyclonal (goat origin)
Isotype	Goat Ig
Purity	Antigen affinity
Gene ID	23645
Localization	Nuclear, cytoplasmic
Applications	Western Blot : 0.1-0.3ug/ml Immunohistochemistry (FFPE) : 2-4ug/ml ICC/IF : 10ug/ml Flow Cytometry : 10ug/10 <sup>6</sup> cells in 0.2ml ELISA (peptide) LOD : 1:128000
Limitations	This GADD34 antibody is available for research use only.



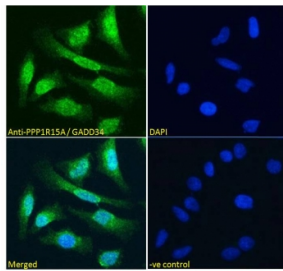
Western blot testing of 1) HEPG2 cell lysate and 2) KLY negative control cell lysate with GADD34 antibody at 0.1ug/ml. Predicted molecular weight ~73 kDa, can be observed at up to ~110 kDa..



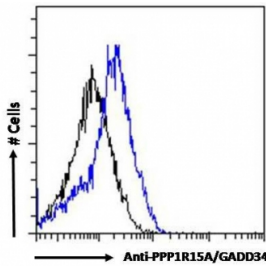
IHC staining of FFPE human liver with GADD34 antibody at 2ug/ml. HIER: steamed with pH6 citrate buffer, HRP-staining.



ICC/IF testing of fixed and permeabilized human HepG2 cells with GADD34 antibody (green) at 10ug/ml and DAPI nuclear stain (blue).



ICC/IF testing of fixed and permeabilized human HeLa cells with GADD34 antibody (green) at 10ug/ml and DAPI nuclear stain (blue).



FACS testing of fixed and permeabilized human HepG2 cells with GADD34 antibody (blue) at 10ug/10<sup>6</sup> cells and naive goat Ig (black).

## Description

Additional name(s) for this target protein: Growth arrest and DNA-damage-inducible 34; PPP1R15A

## Application Notes

Optimal dilution of the GADD34 antibody should be determined by the researcher.

1. Not suitable for ICC/IF testing

## Immunogen

Amino acids AAALDLSGRRG were used as the immunogen for this GADD34 antibody.

## Storage

Aliquot and store the GADD34 antibody at -20oC.

