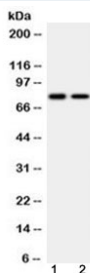


## GAB1 Antibody (R32612)

| Catalog No. | Formulation   | Size   |
|-------------|---|--------|
| R32612      | 0.5mg/ml if reconstituted with 0.2ml sterile DI water | 100 ug |

[Bulk quote request](#)

|                           |   |
|---------------------------|---|
| <b>Availability</b>       | 1-3 business days   |
| <b>Species Reactivity</b> | Human, Rat  |
| <b>Format</b>             | Antigen affinity purified                                     |
| <b>Host</b>               | Rabbit  |
| <b>Clonality</b>          | Polyclonal (rabbit origin)                                    |
| <b>Isotype</b>            | Rabbit IgG  |
| <b>Purity</b>             | Antigen affinity  |
| <b>Buffer</b>             | Lyophilized from 1X PBS with 2.5% BSA and 0.025% sodium azide |
| <b>UniProt</b>            | Q13480  |
| <b>Applications</b>       | Western Blot : 0.5-1ug/ml                                     |
| <b>Limitations</b>        | This GAB1 antibody is available for research use only.        |



Western blot testing of 1) rat testis and 2) human K562 lysate with GAB1 antibody at 0.5ug/ml. Predicted molecular weight ~76 kDa, also observed at 100-110 kDa.

## Description

GRB2-associated-binding protein 1 is a protein that in humans is encoded by the GAB1 gene. It is mapped to 4q31.21. The protein encoded by this gene is a member of the IRS1-like multisubstrate docking protein family. It is an important mediator of branching tubulogenesis and plays a central role in cellular growth response, transformation and apoptosis. Two transcript variants encoding different isoforms have been found for this gene.

## Application Notes

Optimal dilution of the GAB1 antibody should be determined by the researcher.

## **Immunogen**

Amino acids 72-109 (LTFNKKEFENSYIFDINTIDRIFYLVADSEEEEMNKWVR-human) were used as the immunogen for the GAB1 antibody.

## **Storage**

After reconstitution, the GAB1 antibody can be stored for up to one month at 4°C. For long-term, aliquot and store at -20°C. Avoid repeated freezing and thawing.