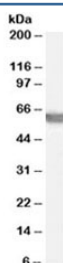


G6PD Antibody (R36085)

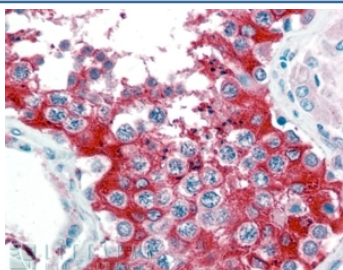
Catalog No.	Formulation	Size
R36085-100UG	0.5 mg/ml in 1X TBS, pH7.3, with 0.5% BSA (US sourced) and 0.02% sodium azide	100 ug

[Bulk quote request](#)

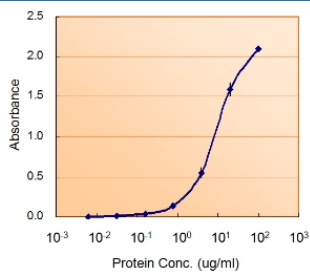
Availability	1-3 business days
Species Reactivity	Human
Predicted Reactivity	Dog, Mouse, Rat
Format	Antigen affinity purified
Clonality	Polyclonal (goat origin)
Isotype	Goat Ig
Purity	Antigen affinity
Gene ID	2539
Applications	Western Blot : 0.03-0.1ug/ml Immunohistochemistry (FFPE) : 2-4ug/ml Enzyme ImmunoAssay : binds recombinant protein (use at 5-10ug/ml) ELISA (peptide) LOD : 1:32000
Limitations	This G6PD antibody is available for research use only.



Western blot testing of human testis lysate with G6PD antibody at 0.03ug/ml. Predicted molecular weight ~59kDa.



IHC staining of FFPE human testis with G6PD antibody at 2.5ug/ml. HIER: steamed with pH6 citrate buffer, AP-staining.



Sandwich ELISA using G6PD antibody at 5ug/ml as the detect.

Description

Additional name(s) for this target protein: Glucose-6-phosphate dehydrogenase

Application Notes

Optimal dilution of the G6PD antibody should be determined by the researcher.

Immunogen

Amino acids STNSDDVRDEKVK were used as the immunogen for this G6PD antibody.

Storage

Aliquot and store the G6PD antibody at -20oC.