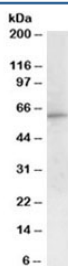


## G6PD Antibody (R34559)

Catalog No.	Formulation	Size
R34559-100UG	0.5 mg/ml in 1X TBS, pH7.3, with 0.5% BSA (US sourced) and 0.02% sodium azide	100 ug

[Bulk quote request](#)

Availability	1-3 business days
Species Reactivity	Human
Predicted Reactivity	Dog, Mouse, Rat
Format	Antigen affinity purified
Clonality	Polyclonal (goat origin)
Isotype	Goat Ig
Purity	Antigen affinity
Gene ID	2539
Applications	Western Blot : 1-3ug/ml ELISA (peptide) LOD : 1:8000
Limitations	This G6PD antibody is available for research use only.



Western blot testing of peripheral blood mononucleocyte lysate with G6PD antibody at 1ug/ml. Predicted molecular weight ~59kDa.

## Description

Additional name(s) for this target protein: Glucose-6-phosphate dehydrogenase

## Application Notes

Optimal dilution of the G6PD antibody should be determined by the researcher.

## Immunogen

Amino acids KPASTNSDDVRDEK were used as the immunogen for this G6PD antibody.

## **Storage**

Aliquot and store the G6PD antibody at -20oC.