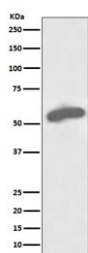


## G6PD Antibody / Glucose-6-phosphate dehydrogenase [clone ABBI-7] (RQ5365)

Catalog No.	Formulation	Size
RQ5365	Antibody in PBS with 0.02% sodium azide, 50% glycerol and 0.4-0.5mg/ml BSA	100 ul

[Bulk quote request](#)

Availability	1-2 weeks
Species Reactivity	Human
Format	Purified
Clonality	Rabbit Monoclonal
Isotype	Rabbit IgG
Clone Name	ABBI-7
Purity	Affinity purified
UniProt	P11413
Applications	Western Blot : 1:500-1:2000
Limitations	This G6PD antibody is available for research use only.



Western blot testing of human MCF7 cell lysate with G6PD antibody. Predicted molecular weight ~59 kDa.

### Description

The G6PD gene encodes glucose-6-phosphate dehydrogenase. This protein is a cytosolic enzyme encoded by a housekeeping X-linked gene whose main function is to produce NADPH, a key electron donor in the defense against oxidizing agents and in reductive biosynthetic reactions. G6PD is remarkable for its genetic diversity. Many variants of G6PD, mostly produced from missense mutations, have been described with wide ranging levels of enzyme activity and associated clinical symptoms. G6PD deficiency may cause neonatal jaundice, acute hemolysis, or severe chronic non-spherocytic hemolytic anemia. Two transcript variants encoding different isoforms have been found for this gene.

[RefSeq]

## Application Notes

Optimal dilution of the G6PD antibody should be determined by the researcher.

## Immunogen

A synthetic peptide specific to human Glucose 6 Phosphate Dehydrogenase / G6PD was used as the immunogen for the G6PD antibody.

## Storage

Store the G6PD antibody at -20oC.