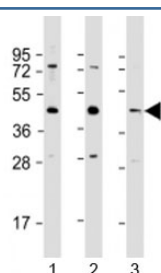


## G6PC3 Antibody / Glucose-6-phosphatase 3 (F53958)

Catalog No.	Formulation	Size
F53958-0.2ML	In 1X PBS, pH 7.4, with 0.09% sodium azide	0.2 ml
F53958-0.05ML	In 1X PBS, pH 7.4, with 0.09% sodium azide	0.05 ml

[Bulk quote request](#)

<b>Availability</b>	1-3 business days
<b>Species Reactivity</b>	Human, Mouse
<b>Format</b>	Antigen affinity purified
<b>Clonality</b>	Polyclonal (rabbit origin)
<b>Isotype</b>	Rabbit Ig
<b>Purity</b>	Antigen affinity
<b>UniProt</b>	Q9BUM1
<b>Applications</b>	Western Blot : 1:500-1000
<b>Limitations</b>	This G6PC3 antibody is available for research use only.



Western blot testing of 1) human HeLa, 2) human A549 and 3) mouse brain lysate with G6PC3 antibody at 1:1000. Predicted molecular weight: 39 kDa.

### Description

Glucose 6 phosphatase, catalytic, 3 hydrolyzes glucose-6-phosphate to glucose in the endoplasmic reticulum. May form with the glucose-6-phosphate transporter (SLC37A4/G6PT) a ubiquitously expressed complex responsible for glucose production through glycogenolysis and gluconeogenesis. Probably required for normal neutrophil function.

### Application Notes

Titration of the G6PC3 antibody may be required due to differences in protocols and secondary/substrate sensitivity.

### Immunogen

A portion of amino acids 215-246 from the human protein was used as the immunogen for the G6PC3 antibody.

## **Storage**

Aliquot the G6PC3 antibody and store frozen at -20oC or colder. Avoid repeated freeze-thaw cycles.