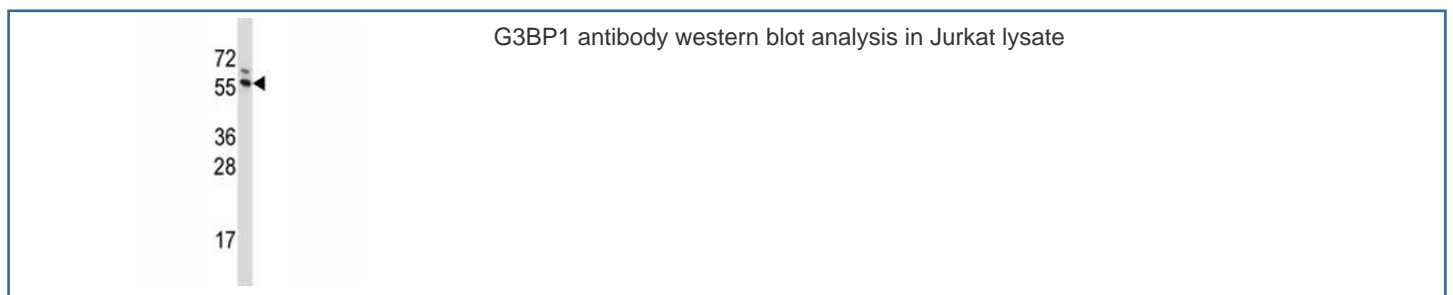


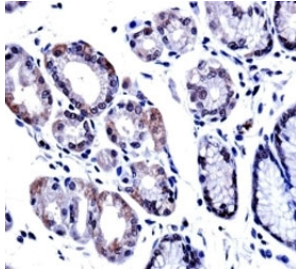
G3BP1 Antibody / Ras GTPase-activating protein-binding protein 1 (F43255)

Catalog No.	Formulation	Size
F43255-0.4ML	In 1X PBS, pH 7.4, with 0.09% sodium azide	0.4 ml
F43255-0.08ML	In 1X PBS, pH 7.4, with 0.09% sodium azide	0.08 ml

[Bulk quote request](#)

Availability	1-3 business days
Species Reactivity	Human
Predicted Reactivity	Bovine, Mouse
Format	Antigen affinity purified
Host	Rabbit
Clonality	Polyclonal (rabbit origin)
Isotype	Rabbit Ig
Purity	Antigen affinity
UniProt	Q13283
Applications	Western Blot : 1:1000 IHC (Paraffin) : 1:10-1:50
Limitations	This G3BP1 antibody is available for research use only.





G3BP1 antibody immunohistochemistry analysis in formalin fixed and paraffin embedded human stomach tissue.

Description

This gene encodes one of the DNA-unwinding enzymes which prefers partially unwound 3'-tailed substrates and can also unwind partial RNA/DNA and RNA/RNA duplexes in an ATP-dependent fashion. This enzyme is a member of the heterogeneous nuclear RNA-binding proteins and is also an element of the Ras signal transduction pathway. It binds specifically to the Ras-GTPase-activating protein by associating with its SH3 domain. Several alternatively spliced transcript variants of this gene have been described, but the full-length nature of some of these variants has not been determined.

Application Notes

Titration of the G3BP1 antibody may be required due to differences in protocols and secondary/substrate sensitivity.

Immunogen

A portion of amino acids 401-430 from the human protein was used as the immunogen for this G3BP1 antibody.

Storage

Aliquot the G3BP1 antibody and store frozen at -20oC or colder. Avoid repeated freeze-thaw cycles.