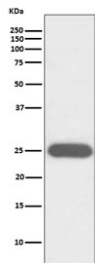


G-CSF Antibody / CSF3 [clone ABAC-3] (RQ5293)

Catalog No.	Formulation	Size
RQ5293	Antibody in PBS with 0.02% sodium azide, 50% glycerol and 0.4-0.5mg/ml BSA	100 ul

[Bulk quote request](#)

Availability	1-2 weeks
Species Reactivity	Human
Format	Purified
Host	Rabbit
Clonality	Rabbit Monoclonal
Isotype	Rabbit IgG
Clone Name	ABAC-3
Purity	Affinity purified
UniProt	P09919
Applications	Western Blot : 1:500-1:2000
Limitations	This G-CSF antibody is available for research use only.



G-CSF Antibody K562 WB. Western blot testing of human K562 cell lysate with G-CSF antibody. Predicted molecular weight ~22 kDa.

Description

The protein encoded by the CSF3 gene is a cytokine that controls the production, differentiation, and function of granulocytes. The active protein is found extracellularly. [RefSeq]

For a reference GCSF antibody supporting cytokine signaling and immune regulation studies, see [clone CSF3/4594](#).

Application Notes

Optimal dilution of the G-CSF antibody should be determined by the researcher.

Immunogen

A synthetic peptide specific to human G-CSF / CSF3 was used as the immunogen for the G-CSF antibody.

Storage

Store the G-CSF antibody at -20oC.