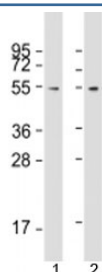


FZR1 Antibody [clone 1621CT637.76.67] (F53804)

Catalog No.	Formulation	Size
F53804-0.2ML	In 1X PBS, pH 7.4, with 0.09% sodium azide	0.2 ml
F53804-0.05ML	In 1X PBS, pH 7.4, with 0.09% sodium azide	0.05 ml

[Bulk quote request](#)

Availability	1-3 business days
Species Reactivity	Human
Format	Purified
Host	Mouse
Clonality	Monoclonal (mouse origin)
Isotype	Mouse IgG1, kappa
Clone Name	1621CT637.76.67
Purity	Protein G affinity chromatography
UniProt	Q9UM11
Applications	Western Blot : 1:1000-2000
Limitations	This FZR1 antibody is available for research use only.



Western blot testing of human 1) 293T/17 and 2) HeLa cell lysate with FZR antibody at 1:2000. Predicted molecular weight: 55 kDa.

Description

Fizzy related protein 1 is a key regulator of ligase activity of the anaphase promoting complex/cyclosome (APC/C), which confers substrate specificity upon the complex. Associates with the APC/C in late mitosis, in replacement of CDC20, and activates the APC/C during anaphase and telophase. The APC/C remains active in degrading substrates to ensure that positive regulators of the cell cycle do not accumulate prematurely. At the G1/S transition FZR1 is phosphorylated, leading to its dissociation from the APC/C. Following DNA damage, it is required for the G2 DNA damage checkpoint: its

dephosphorylation and reassociation with the APC/C leads to the ubiquitination of PLK1, preventing entry into mitosis.

Application Notes

Titration of the FZR1 antibody may be required due to differences in protocols and substrate sensitivity.

Immunogen

Human recombinant protein corresponding to amino acids 1-496 was used as the immunogen for this FZR1 antibody.

Storage

Aliquot the FZR1 antibody and store frozen at -20oC or colder. Avoid repeated freeze-thaw cycles.