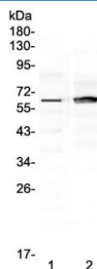


## FZD4 Antibody / Frizzled 4 (RQ4100)

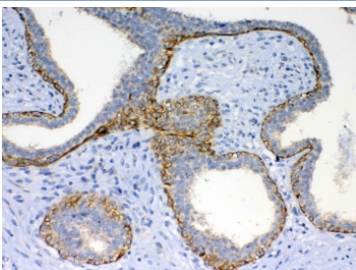
| Catalog No. | Formulation   | Size   |
|-------------|---|--------|
| RQ4100      | 0.5mg/ml if reconstituted with 0.2ml sterile DI water | 100 ug |

[Bulk quote request](#)

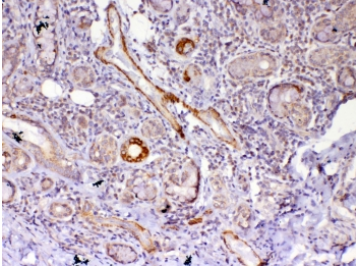
|                           |   |
|---------------------------|---|
| <b>Availability</b>       | 1-3 business days   |
| <b>Species Reactivity</b> | Human, Mouse, Rat   |
| <b>Format</b>             | Antigen affinity purified   |
| <b>Host</b>               | Rabbit  |
| <b>Clonality</b>          | Polyclonal (rabbit origin)  |
| <b>Isotype</b>            | Rabbit IgG  |
| <b>Purity</b>             | Antigen affinity purified   |
| <b>Buffer</b>             | Lyophilized from 1X PBS with 2% Trehalose and 0.025% sodium azide   |
| <b>UniProt</b>            | Q9ULV1  |
| <b>Localization</b>       | Cytoplasmic, membrane   |
| <b>Applications</b>       | Western Blot : 0.5-1ug/ml<br>Immunohistochemistry (FFPE) : 1-2ug/ml |
| <b>Limitations</b>        | This FZD4 antibody is available for research use only.              |



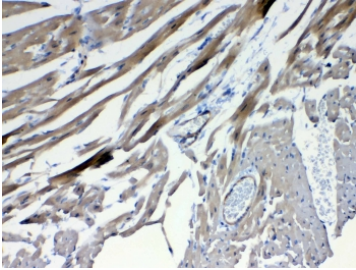
Western blot testing of human 1) placenta and 2) MCF7 lysate with FZD4 antibody at 0.5ug/ml. Predicted molecular weight ~60 kDa.



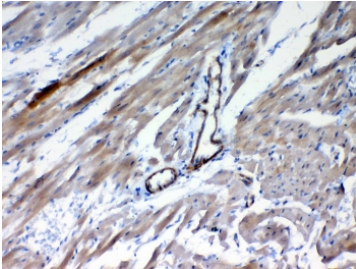
IHC testing of FFPE human breast cancer tissue with FZD4 antibody at 1ug/ml. Required HIER: steam section in pH6 citrate buffer for 20 min and allow to cool prior to testing.



IHC testing of FFPE human lung cancer tissue with FZD4 antibody at 1ug/ml. Required HIER: steam section in pH6 citrate buffer for 20 min and allow to cool prior to testing.



IHC testing of FFPE mouse heart tissue with FZD4 antibody at 1ug/ml. Required HIER: steam section in pH6 citrate buffer for 20 min and allow to cool prior to testing.



IHC testing of FFPE rat heart tissue with FZD4 antibody at 1ug/ml. Required HIER: steam section in pH6 citrate buffer for 20 min and allow to cool prior to testing.

## Description

Frizzled-4 is a protein that in humans is encoded by the FZD4 gene. This gene is a member of the frizzled gene family. Members of this family encode seven-transmembrane domain proteins that are receptors for the Wingless type MMTV integration site family of signaling proteins. Most frizzled receptors are coupled to the beta-catenin canonical signaling pathway. This protein may play a role as a positive regulator of the Wingless type MMTV integration site signaling pathway. A transcript variant retaining intronic sequence and encoding a shorter isoform has been described, however, its expression is not supported by other experimental evidence.

## Application Notes

Optimal dilution of the FZD4 antibody should be determined by the researcher.

## Immunogen

Amino acids QNLGYNVTKMPNLVGHELQTDALQLTTFTPLIQY from the human protein were used as the immunogen for the FZD4 antibody.

## Storage

After reconstitution, the FZD4 antibody can be stored for up to one month at 4oC. For long-term, aliquot and store at -20oC. Avoid repeated freezing and thawing.

