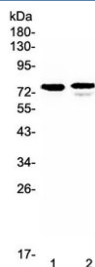


FZD3 Antibody / Frizzled 3 (RQ4138)

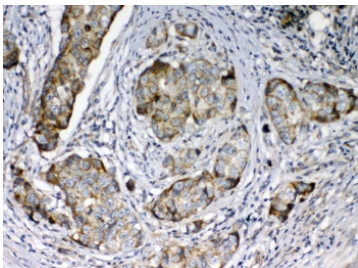
Catalog No.	Formulation	Size
RQ4138	0.5mg/ml if reconstituted with 0.2ml sterile DI water	100 ug

[Bulk quote request](#)

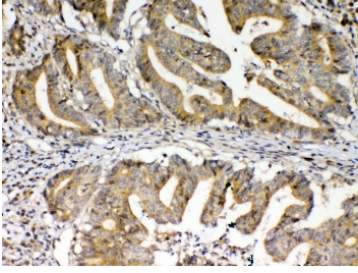
Availability	1-3 business days
Species Reactivity	Human, Mouse, Rat
Format	Antigen affinity purified
Host	Rabbit
Clonality	Polyclonal (rabbit origin)
Isotype	Rabbit IgG
Purity	Antigen affinity purified
Buffer	Lyophilized from 1X PBS with 2% Trehalose and 0.025% sodium azide
UniProt	Q9NPG1
Localization	Membrane, cytoplasm
Applications	Western Blot : 0.5-1ug/ml IHC (FFPE) : 1-2ug/ml
Limitations	This FZD3 antibody is available for research use only.



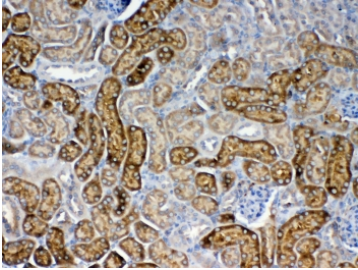
Western blot testing of human 1) SK-OV-3 and 2) Jurkat lystate with FZD3 antibody at 0.5ug/ml. Predicted molecular weight ~76 kDa.



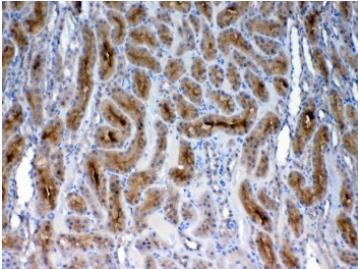
IHC testing of FFPE human breast cancer tissue with FZD3 antibody at 1ug/ml. Required HIER: steam section in pH6 citrate buffer for 20 min and allow to cool prior to testing.



IHC testing of FFPE human colon cancer tissue with FZD3 antibody at 1ug/ml. Required HIER: steam section in pH6 citrate buffer for 20 min and allow to cool prior to testing.



IHC testing of FFPE mouse kidney tissue with FZD3 antibody at 1ug/ml. Required HIER: steam section in pH6 citrate buffer for 20 min and allow to cool prior to testing.



IHC testing of FFPE rat kidney tissue with FZD3 antibody at 1ug/ml. Required HIER: steam section in pH6 citrate buffer for 20 min and allow to cool prior to testing.

Description

Frizzled-3 is a protein that in humans is encoded by the FZD3 gene. This gene is a member of the frizzled gene family. Members of this family encode seven-transmembrane domain proteins that are receptors for the wingless type MMTV integration site family of signaling proteins. Most frizzled receptors are coupled to the beta-catenin canonical signaling pathway. The function of this protein is unknown, although it may play a role in mammalian hair follicle development. Alternative splicing results in multiple transcript variants. This gene is a susceptibility locus for schizophrenia.

Application Notes

Optimal dilution of the FZD3 antibody should be determined by the researcher.

Immunogen

Amino acids MPNLLNHYDQQTAAALAMEPFHPMVNLDCSRDFRPFL from the human protein were used as the immunogen for the FZD3 antibody.

Storage

After reconstitution, the FZD3 antibody can be stored for up to one month at 4°C. For long-term, aliquot and store at -20°C. Avoid repeated freezing and thawing.

