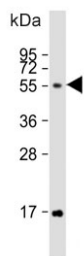


FUT6 Antibody (F54811)

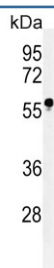
Catalog No.	Formulation	Size
F54811-0.4ML	In 1X PBS, pH 7.4, with 0.09% sodium azide	0.4 ml
F54811-0.08ML	In 1X PBS, pH 7.4, with 0.09% sodium azide	0.08 ml

[Bulk quote request](#)

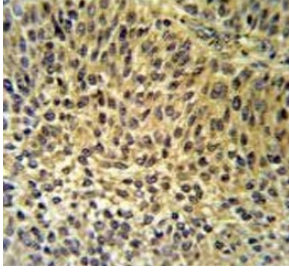
Availability	1-3 business days
Species Reactivity	Human
Format	Purified
Clonality	Polyclonal (rabbit origin)
Isotype	Rabbit Ig
Purity	Antigen affinity purified
UniProt	P51993
Localization	Cytoplasmic, secreted
Applications	Flow Cytometry : 1:10-1:50 (1x10e6 cells) Immunohistochemistry (FFPE) : 1:50-1:100 Western Blot : 1:500-1:1000
Limitations	This FUT6 antibody is available for research use only.



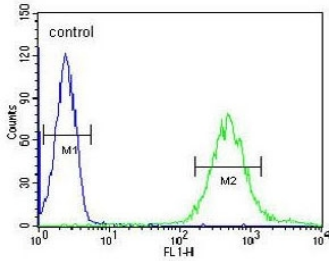
Western blot testing of human HeLa cell lysate with FUT6 antibody. Predicted molecular weight ~42 kDa, but may be observed at higher molecular weights due to glycosylation.



Western blot testing of human HL-60 cell lysate with FUT6 antibody. Predicted molecular weight ~42 kDa, but may be observed at higher molecular weights due to glycosylation.



IHC testing of FFPE human bladder carcinoma tissue with IRF7 antibody. HIER: steam section in pH6 citrate buffer for 20 min and allow to cool prior to staining.



Flow cytometry testing of human HL-60 cells with FUT6 antibody; Blue=isotype control, Green= FUT6 antibody.

Description

4-galactosyl-N-acetylglucosaminide 3-alpha-L-fucosyltransferase FUT6 is a Golgi stack membrane protein that is involved in the creation of sialyl-Lewis X, an E-selectin ligand.

Application Notes

The stated application concentrations are suggested starting points. Titration of the FUT6 antibody may be required due to differences in protocols and secondary/substrate sensitivity.

Immunogen

A portion of amino acids 102-130 from the human protein was used as the immunogen for the FUT6 antibody.

Storage

Aliquot the FUT6 antibody and store frozen at -20oC or colder. Avoid repeated freeze-thaw cycles.