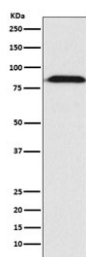


## Furin Antibody [clone AEGA-6] (RQ5297)

Catalog No.	Formulation	Size
RQ5297	Antibody in PBS with 0.02% sodium azide, 50% glycerol and 0.4-0.5mg/ml BSA	100 ul

[Bulk quote request](#)

Availability	1-2 weeks
Species Reactivity	Human
Format	Purified
Clonality	Rabbit Monoclonal
Isotype	Rabbit IgG
Clone Name	AEGA-6
Purity	Affinity purified
UniProt	P09958
Applications	Western Blot : 1:500-1:2000
Limitations	This Furin antibody is available for research use only.



Western blot testing of human HepG2 cell lysate with Furin antibody. Expected molecular weight: 90-110 kDa depending on glycosylation level.

## Description

The **FURIN** gene encodes a member of the subtilisin-like proprotein convertase family, which includes proteases that process protein and peptide precursors trafficking through regulated or constitutive branches of the secretory pathway. It encodes a type 1 membrane bound protease that is expressed in many tissues, including neuroendocrine, liver, gut, and brain. The encoded protein undergoes an initial autocatalytic processing event in the ER and then sorts to the trans-Golgi network through endosomes where a second autocatalytic event takes place and the catalytic activity is acquired. The product of this gene is one of the seven basic amino acid-specific members which cleave their substrates at single or paired basic residues. Some of its substrates include parathyroid hormone, transforming growth factor beta 1

precursor, proalbumin, pro-beta-secretase, membrane type-1 matrix metalloproteinase, beta subunit of pro-nerve growth factor and von Willebrand factor. It is also thought to be one of the proteases responsible for the activation of HIV envelope glycoproteins gp160 and gp140 and may play a role in tumor progression. This gene is located in close proximity to family member proprotein convertase subtilisin/kexin type 6 and upstream of the FES oncogene. [RefSeq]

## Application Notes

Optimal dilution of the Furin antibody should be determined by the researcher.

## Immunogen

A synthetic peptide specific to human Furin was used as the immunogen for the Furin antibody.

## Storage

Store the Furin antibody at -20oC.