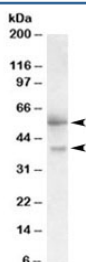


FSTL1 Antibody (R36125)

Catalog No.	Formulation	Size
R36125-100UG	0.5 mg/ml in 1X TBS, pH7.3, with 0.5% BSA (US sourced) and 0.02% sodium azide	100 ug

Bulk quote request

Availability	1-3 business days
Species Reactivity	Human
Predicted Reactivity	Cow
Format	Antigen affinity purified
Clonality	Polyclonal (goat origin)
Isotype	Goat Ig
Purity	Antigen affinity
Gene ID	11167
Applications	Western Blot : 0.3-1ug/ml ELISA (peptide) LOD : 1:16000
Limitations	This FSTL1 antibody is available for research use only.



Western blot testing of human placenta lysate with FSTL1 antibody at 0.3ug/ml.
Predicted molecular weight ~35 kDa, observed at 40~55 kDa.

Description

Additional name(s) for this target protein: Follistatin-like 1

Application Notes

Optimal dilution of the FSTL1 antibody should be determined by the researcher.

1. FSTL1 is a secreted glycoprotein observed from 40~55kDa ([view Nature paper](#)).

Immunogen

Amino acids TAEKTKRVSTKEI were used as the immunogen for this FSTL1 antibody.

Storage

Aliquot and store the FSTL1 antibody at -20oC.