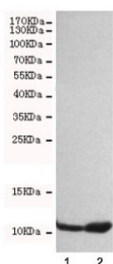


## FSP1 Antibody / S100A4 [clone 3D10-B4-D10] (F54010)

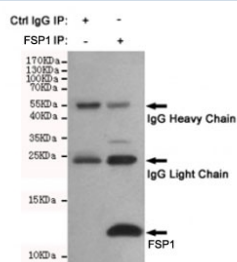
Catalog No.	Formulation	Size
F54010-0.1ML	In PBS with 50% glycerol and 0.03% ProClin 300	0.1 ml

**Bulk quote request**

<b>Availability</b>	1-3 business days
<b>Species Reactivity</b>	Human
<b>Format</b>	Purified
<b>Clonality</b>	Monoclonal (mouse origin)
<b>Isotype</b>	Mouse IgG1
<b>Clone Name</b>	3D10-B4-D10
<b>Purity</b>	Protein G affinity
<b>UniProt</b>	P26447
<b>Applications</b>	Western Blot : 1:500 Immunoprecipitation : suitable
<b>Limitations</b>	This FSP1 antibody is available for research use only.



Western blot testing of 1) HeLa and 2) A549 cell lysates with FSP1 antibody at 1:500. Predicted molecular weight ~12 kDa.



Immunoprecipitation and western blot of HeLa cell lysate using the FSP1 antibody. Predicted molecular weight ~12 kDa.

## Description

Fibroblast-specific protein 1 (FSP1), also called S100A4, belongs to the S100 superfamily of cytoplasmic calcium binding proteins and can be expressed by different cell types of mesenchymal origin. It likely contributes to motility, invasion, and tubulin polymerization.

## Application Notes

The stated application concentrations are suggested starting points. Titration of the FSP1 antibody may be required due to differences in protocols and secondary/substrate sensitivity.

## Immunogen

A human recombinant protein was used as the immunogen for this FSP1 antibody.

## Storage

Store the FSP1 antibody at -20°C.