

FSH beta Antibody (R31531)

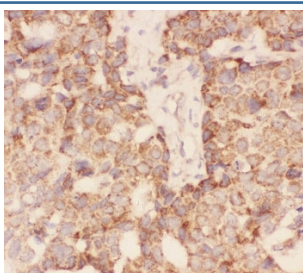
Catalog No.	Formulation	Size
R31531	0.5mg/ml if reconstituted with 0.2ml sterile DI water	100 ug

[Bulk quote request](#)

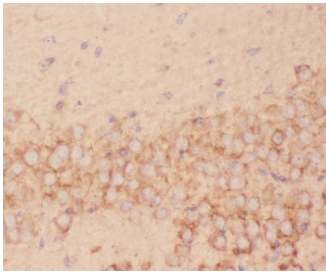
Availability	1-3 business days
Species Reactivity	Human, Mouse
Format	Antigen affinity purified
Host	Rabbit
Clonality	Polyclonal (rabbit origin)
Isotype	Rabbit IgG
Purity	Antigen affinity
Buffer	Lyophilized from 1X PBS with 2.5% BSA and 0.025% sodium azide
Gene ID	2488
Applications	Western Blot : 0.5-1ug/ml IHC (FFPE) : 0.5-1ug/ml
Limitations	This FSH beta antibody is available for research use only.

kDa
200-
116-
97-
66-
44-
31-
22-
14-
6-

Western blot testing of FSH beta antibody and recombinant human protein (0.5ng)



FSH beta Antibody Breast Cancer Immunohistochemistry. IHC-P: FSH beta antibody testing of human breast cancer tissue.



FSH beta Antibody Mouse Brain Immunohistochemistry. IHC-P: FSH beta antibody testing of mouse brain tissue.

Description

FSH beta Antibody specifically detects Follitropin subunit beta, a protein that in humans is encoded by the FSHB gene. FSH beta enables ovarian folliculogenesis to the antral follicle stage and is essential for Sertoli cell proliferation and maintenance of sperm quality in the testis. It can stimulate development of follicle and spermatogenesis in the reproductive organs.

For additional reproductive hormone and pituitary signaling research antibodies targeting gonadotroph markers and endocrine-associated cellular pathways, explore the broader [FSHB Antibody](#) page featuring monoclonal clone FLTPb-1.

Application Notes

The stated application concentrations are suggested starting amounts. Titration of the FSH beta antibody may be required due to differences in protocols and secondary/substrate sensitivity.

Immunogen

Human partial recombinant protein (AA 19-129) was used as the immunogen for this FSH beta antibody.

Storage

After reconstitution, the FSH beta antibody can be stored for up to one month at 4°C. For long-term, aliquot and store at -20°C. Avoid repeated freezing and thawing.