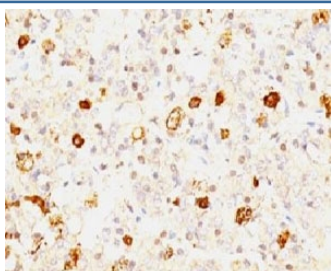


## FSH-beta Antibody [clone FSHb/1062] (V2509)

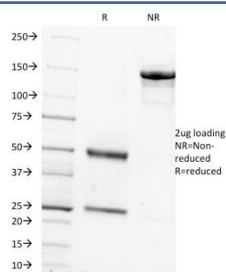
| Catalog No.    | Formulation   | Size   |
|----------------|---|--------|
| V2509-100UG    | 0.2 mg/ml in 1X PBS with 0.1 mg/ml BSA (US sourced) and 0.05% sodium azide                      | 100 ug |
| V2509-20UG     | 0.2 mg/ml in 1X PBS with 0.1 mg/ml BSA (US sourced) and 0.05% sodium azide                      | 20 ug  |
| V2509SAF-100UG | 1 mg/ml in 1X PBS; BSA free, sodium azide free  | 100 ug |
| V2509IHC-7ML   | Prediluted in 1X PBS with 0.1 mg/ml BSA (US sourced) and 0.05% sodium azide; *For IHC use only* | 7 ml   |

**Bulk quote request**

|                           |   |
|---------------------------|---|
| <b>Availability</b>       | 1-3 business days   |
| <b>Species Reactivity</b> | Human   |
| <b>Format</b>             | Purified  |
| <b>Clonality</b>          | Monoclonal (mouse origin)                                       |
| <b>Isotype</b>            | Mouse IgG1, kappa   |
| <b>Clone Name</b>         | FSHb/1062   |
| <b>Purity</b>             | Protein G affinity chromatography                               |
| <b>UniProt</b>            | P01225  |
| <b>Localization</b>       | Cytoplasmic, secreted   |
| <b>Applications</b>       | Immunohistochemistry (FFPE) : 1-2ug/ml for 30 min at RT (1) (2) |
| <b>Limitations</b>        | This FSH-beta antibody is available for research use only.      |



IHC: Formalin-fixed, paraffin-embedded human pituitary stained with FSH-beta antibody (clone FSHb/1062).



SDS-PAGE Analysis of Purified, BSA-Free FSH-beta Antibody (clone FSHb/1062). Confirmation of Integrity and Purity of the Antibody.

## Description

This mAb reacts with a protein of 22 kDa, identified as beta sub-unit of FSH. It does not cross react with the alpha sub-unit. Follicle stimulating hormone (FSH) is a hormone synthesized and secreted by gonadotrophs in the anterior pituitary gland. In the ovary, FSH stimulates the growth of immature Graafian follicles to maturation. As the follicle grows, it releases inhibin, which deactivates the FSH production. In men, FSH enhances the production of androgen-binding protein by the Sertoli cells of the testis and is critical for spermatogenesis. FSH and LH act synergistically in reproduction. FSH is a useful marker in the classification of pituitary tumors and the study of pituitary disease.

## Application Notes

Optimal dilution of the FSH-beta antibody should be determined by the researcher.

1. Staining of formalin-fixed tissues requires boiling tissue sections in pH 9 10mM Tris with 1mM EDTA for 10-20 min followed by cooling at RT for 20 minutes.
2. The prediluted format is supplied in a dropper bottle and is optimized for use in IHC. After epitope retrieval step (if required), drip mAb solution onto the tissue section and incubate at RT for 30 min.

## Immunogen

Recombinant hFSH beta sub-unit was used as the immunogen for the FSH-beta antibody.

## Storage

Store the FSH-beta antibody at 2-8oC (with azide) or aliquot and store at -20oC or colder (without azide).