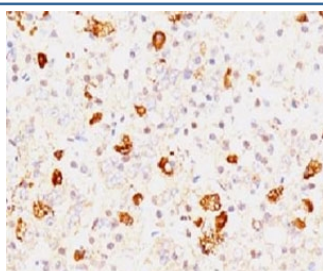


FSH-beta Antibody [clone FLTPb-1] (V7078)

Catalog No.	Formulation	Size
V7078-100UG	0.2 mg/ml in 1X PBS with 0.1 mg/ml BSA (US sourced) and 0.05% sodium azide	100 ug
V7078-20UG	0.2 mg/ml in 1X PBS with 0.1 mg/ml BSA (US sourced) and 0.05% sodium azide	20 ug
V7078SAF-100UG	1 mg/ml in 1X PBS; BSA free, sodium azide free	100 ug
V7078IHC-7ML	Prediluted in 1X PBS with 0.1 mg/ml BSA (US sourced) and 0.05% sodium azide; *For IHC use only*	7 ml

[Bulk quote request](#)

Availability	1-3 business days
Species Reactivity	Human
Format	Purified
Clonality	Monoclonal (mouse origin)
Isotype	Mouse IgG1, kappa
Clone Name	FLTPb-1
Purity	Protein G affinity chromatography
UniProt	P01225
Localization	Cytoplasmic, secreted
Applications	Immunohistochemistry (FFPE) : 0.5-1ug/ml for 30 min at RT Prediluted IHC Only Format : incubate for 30 min at RT (1)
Limitations	This FSH-beta antibody is available for research use only.



IHC testing of FFPE human pituitary and FSH-beta antibody (clone FLTPb-1). Staining of formalin-fixed tissues requires boiling tissue sections in pH 9 10mM Tris with 1mM EDTA for 10-20 min followed by cooling at RT for 20 minutes.

Description

Follicle stimulating hormone (FSH) is a hormone synthesized and secreted by gonadotrophs in the anterior pituitary gland. In the ovary, FSH stimulates the growth of immature Graafian follicles to maturation. As the follicle grows, it releases inhibin, which deactivates the FSH production. In men, FSH enhances the production of androgen-binding protein by the Sertoli cells of the testis and is critical for spermatogenesis. FSH and LH act synergistically in reproduction. FSH is a useful marker in the classification of pituitary tumors and the study of pituitary disease.

Application Notes

Optimal dilution of the FSH-beta antibody should be determined by the researcher.

1. The prediluted format is supplied in a dropper bottle and is optimized for use in IHC. After epitope retrieval step (if required), drip mAb solution onto the tissue section and incubate at RT for 30 min.

Immunogen

Recombinant hFSH beta subunit was used as the immunogen for the FSH-beta antibody. It does not cross-react with the alpha subunit

Storage

Store the FSH-beta antibody at 2-8oC (with azide) or aliquot and store at -20oC or colder (without azide).