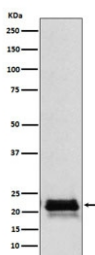


FSH beta Antibody [clone AFGI-6] (RQ4875)

Catalog No.	Formulation	Size
RQ4875	Antibody in PBS with 0.02% sodium azide, 50% glycerol and 0.4-0.5mg/ml BSA	100 ul

[Bulk quote request](#)

Availability	1-2 weeks
Species Reactivity	Human
Format	Purified
Clonality	Rabbit Monoclonal
Isotype	Rabbit IgG
Clone Name	AFGI-6
Purity	Affinity purified
UniProt	P01225
Applications	Western Blot : 1:500-1:2000
Limitations	This FSH beta antibody is available for research use only.



Western blot testing of human pituitary lysate with FSH beta antibody. Expected molecular weight: 17-23 kDa depending on level of glycosylation.

Description

The FSHB gene encodes the beta subunit of follicle-stimulating hormone. In conjunction with luteinizing hormone, follicle-stimulating hormone induces egg and sperm production. [RefSeq]

Application Notes

Optimal dilution of the FSH beta antibody should be determined by the researcher.

Immunogen

A synthetic peptide specific to human FSH beta was used as the immunogen for the FSH beta antibody.

Storage

Store the FSH beta antibody at -20oC.