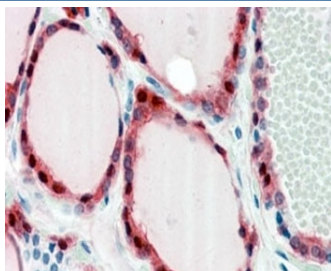


## Frizzled 2 Antibody (R35814)

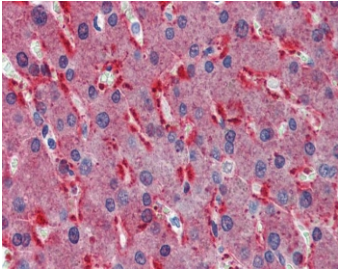
Catalog No.	Formulation	Size
R35814-100UG	0.5 mg/ml in 1X TBS, pH7.3, with 0.5% BSA (US sourced) and 0.02% sodium azide	100 ug

[Bulk quote request](#)

Availability	1-3 business days
Species Reactivity	Human
Predicted Reactivity	Mouse, Rat
Format	Antigen affinity purified
Host	Goat
Clonality	Polyclonal (goat origin)
Isotype	Goat Ig
Purity	Antigen affinity
Gene ID	2535
Localization	Cytoplasmic, membrane
Applications	Immunohistochemistry (FFPE) : 2.5-5ug/ml ELISA (peptide) LOD : 1:64000
Limitations	This Frizzled 2 antibody is available for research use only.



IHC testing of FFPE human thyroid gland with Frizzled 2 antibody at 2.5ug/ml. HIER: steamed with pH6 citrate buffer, AP-staining.



IHC testing of FFPE human liver with Frizzled 2 antibody at 2.5ug/ml. HIER: steamed with pH6 citrate buffer, AP-staining.

## Description

Additional name(s) for this target protein: FZD2

## Application Notes

Optimal dilution of the Frizzled 2 antibody should be determined by the researcher.

## Immunogen

Amino acids RYATLEHPFHCPR were used as the immunogen for this Frizzled 2 antibody.

## Storage

Aliquot and store the Frizzled 2 antibody at -20oC.