

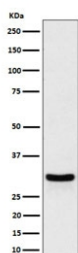
FRAT1 Antibody / Frequently rearranged in advanced T-cell lymphomas 1 [clone 28F68] (RQ8587)

Catalog No.	Formulation	Size
RQ8587	Antibody in PBS with 0.02% sodium azide, 50% glycerol and 0.4-0.5mg/ml BSA	100 ug

Recombinant **RABBIT MONOCLONAL**

[Bulk quote request](#)

Availability	1-3 days
Species Reactivity	Human
Format	Purified
Clonality	Recombinant Rabbit Monoclonal
Isotype	Rabbit IgG
Clone Name	28F68
Purity	Affinity chromatography
UniProt	Q92837
Applications	Western Blot : 1:500-1:2000
Limitations	This FRAT1 antibody is available for research use only.



Western blot testing of human HeLa cell lysate with FRAT1 antibody. Predicted molecular weight ~29 kDa.

Description

Positively regulates the Wnt signaling pathway by stabilizing beta-catenin through the association with GSK-3. May play a role in tumor progression and collaborate with PIM1 and MYC in lymphomagenesis. [UniProt]

Application Notes

Optimal dilution of the FRAT1 antibody should be determined by the researcher.

Immunogen

A synthetic peptide from human FRAT1 protein was used as the immunogen for the FRAT1 antibody.

Storage

Store the FRAT1 antibody at -20oC.