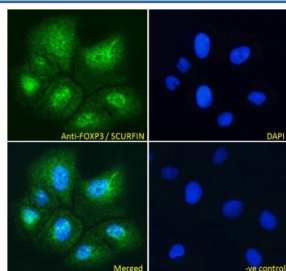


## FOXP3 Antibody (R36030)

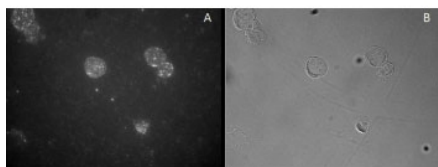
Catalog No.	Formulation	Size
R36030-100UG	0.5 mg/ml in 1X TBS, pH7.3, with 0.5% BSA (US sourced) and 0.02% sodium azide	100 ug

[Bulk quote request](#)

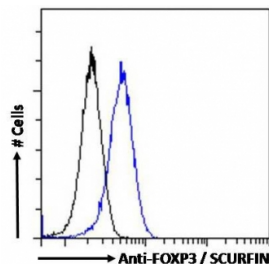
Availability	1-3 business days
Species Reactivity	Human
Predicted Reactivity	Dog, Pig
Format	Antigen affinity purified
Host	Goat
Clonality	Polyclonal (goat origin)
Isotype	Goat Ig
Purity	Antigen affinity
Gene ID	50943
Applications	Western Blot : 1-3ug/ml ICC/IF : 10ug/ml Flow Cytometry : 10ug/10 <sup>6</sup> cells ELISA (peptide) LOD : 1:8000
Limitations	This FOXP3 antibody is available for research use only.



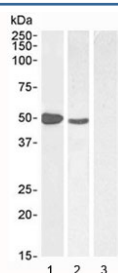
ICC/IF testing of fixed and permeabilized human U-2OS cells with FOXP3 antibody (green) at 10ug/ml and DAPI nuclear stain (blue).



Immunocytochemistry staining of CD25-sorted (Treg) human blood cells with FOXP3 antibody, detected by FITC (A) and in phase contrast (B).



FACS testing of fixed and permeabilized human Jurkat cells with FOXP3 antibody (blue) at 10ug/10<sup>6</sup> cells and naive goat Ig (black).



Western blot testing of 1) human muscle, 2) MOLT4 and 3) human pancreas (negative control) lysate at 1/2/1 ug/ml respectively. Predicted molecular weight ~47 kDa.

## Description

Additional name(s) for this target protein: Forkhead box P3, SCURFIN

## Application Notes

Optimal dilution of the FOXP3 antibody should be determined by the researcher.

## Immunogen

Amino acids SQRPSRCSNPTGP were used as the immunogen for this FOXP3 antibody.

## Storage

Aliquot and store the FOXP3 antibody at -20oC.