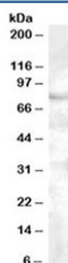


FOXP2 Antibody (R35588)

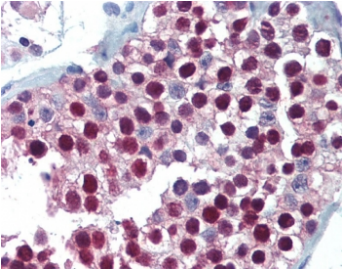
| Catalog No. | Formulation | Size |
|--------------|---|--------|
| R35588-100UG | 0.5 mg/ml in 1X TBS, pH7.3, with 0.5% BSA (US sourced) and 0.02% sodium azide | 100 ug |

[Bulk quote request](#)

| | |
|--------------------|---|
| Availability | 1-3 business days |
| Species Reactivity | Human |
| Format | Antigen affinity purified |
| Host | Goat |
| Clonality | Polyclonal (goat origin) |
| Isotype | Goat Ig |
| Purity | Antigen affinity |
| Gene ID | 93986 |
| Localization | Nuclear |
| Applications | Western Blot : 0.5-1.5ug/ml IHC (FFPE) : 5ug/ml ELISA (peptide) LOD : 1:32000 |
| Limitations | This FOXP2 antibody is available for research use only. |



Western blot testing of human cerebellum lysate with FOXP2 antibody at 0.5ug/ml.
Predicted molecular weight: ~80 kDa.



IHC testing of FFPE human testis tissue with FOXP2 antibody at 5ug/ml. Required HIER: steamed antigen retrieval with pH6 citrate buffer; AP-staining.

Description

Additional name(s) for this target protein: Forkhead box P2

Application Notes

Optimal dilution of the FOXP2 antibody should be determined by the researcher.

Immunogen

Amino acids REIEEEPLSEDLE were used as the immunogen for this FOXP2 antibody.

Storage

Aliquot and store the FOXP2 antibody at -20oC.