

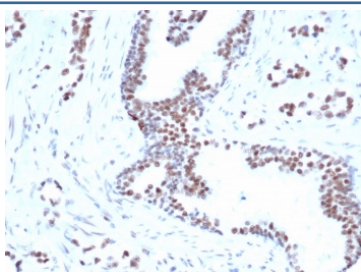
FOXP1 Antibody [clone rFOXP1/6902] (V9506)

Catalog No.	Formulation	Size
V9506-100UG	0.2 mg/ml in 1X PBS with 0.1 mg/ml BSA (US sourced), 0.05% sodium azide	100 ug
V9506-20UG	0.2 mg/ml in 1X PBS with 0.1 mg/ml BSA (US sourced), 0.05% sodium azide	20 ug
V9506SAF-100UG	1 mg/ml in 1X PBS; BSA free, sodium azide free	100 ug

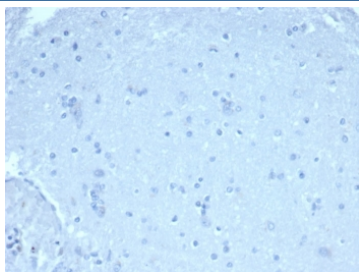
Recombinant **MOUSE MONOCLONAL**

[Bulk quote request](#)

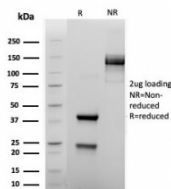
Availability	1-3 business days
Species Reactivity	Human
Format	Purified
Clonality	Recombinant Mouse Monoclonal
Isotype	Mouse IgG1, kappa
Clone Name	rFOXP1/6902
Purity	Protein A/G affinity
UniProt	Q9H334
Localization	Nucleus
Applications	Immunohistochemistry (FFPE) : 1-2ug/ml
Limitations	This FOXP1 antibody is available for research use only.



IHC staining of FFPE human prostate carcinoma tissue with FOXP1 antibody (clone rFOXP1/6902) [1ug/ml in PBS] for 30min RT. HIER: boil tissue sections in pH 9 10mM Tris with 1mM EDTA for 20 min and allow to cool before testing.



Negative control: IHC staining of FFPE human brain tissue using FOXP1 antibody (clone rFOXP1/6902) at 1ug/ml in PBS for 30min RT. HIER: boil tissue sections in pH 9 10mM Tris with 1mM EDTA for 20 min and allow to cool before testing.



SDS-PAGE analysis of purified, BSA-free FOXP1 antibody (clone rFOXP1/6902) as confirmation of integrity and purity.

Description

Transcriptional repressor. It plays an important role in the specification and differentiation of lung epithelium. Can act with CTBP1 to synergistically repress transcription but CTPBP1 is not essential. Essential transcriptional regulator of B cell development. FOXP1 protein plays an important role in the specification and differentiation of lung epithelium, also acts cooperatively with FOXP4 to regulate lung secretory epithelial cell fate and regeneration by restricting the goblet cell lineage program.

Application Notes

Optimal dilution of the FOXP1 antibody should be determined by the researcher.

Immunogen

A portion of amino acids 350-450 was used as the immunogen for the FOXP1 antibody.

Storage

Aliquot the FOXP1 antibody and store frozen at -20oC or colder. Avoid repeated freeze-thaw cycles.