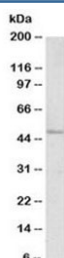


FOXL2 Antibody (R33635)

| Catalog No. | Formulation | Size |
|--------------|---|--------|
| R33635-100UG | 0.5 mg/ml in 1X TBS, pH7.3, with 0.5% BSA (US sourced) and 0.02% sodium azide | 100 ug |

[Bulk quote request](#)

| | |
|----------------------|--|
| Availability | 1-3 business days |
| Species Reactivity | Human |
| Predicted Reactivity | Mouse, Rat |
| Format | Antigen affinity purified |
| Host | Goat |
| Clonality | Polyclonal (goat origin) |
| Isotype | Goat Ig |
| Purity | Antigen affinity |
| Gene ID | 668 |
| Localization | Nuclear |
| Applications | Western Blot : 0.5-1.5ug/ml ELISA (peptide) LOD : 1:64000 |
| Limitations | This FOXL2 antibody is available for research use only. |



Western blot testing of human ovary lysate with FOXL2 antibody at 1ug/ml. Predicted molecular weight ~38 kDa, but can be observed at 45-50 kDa.

Description

Additional name(s) for this target protein: Forkhead box L2

Application Notes

Optimal dilution of the FOXL2 antibody should be determined by the researcher.

Immunogen

Amino acids DSKTGALHSRLDL were used as the immunogen for this FOXL2 antibody.

Storage

Aliquot and store the FOXL2 antibody at -20oC.

References (1)