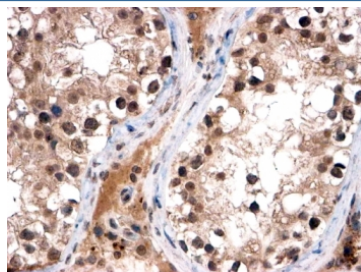


FOXI1 Antibody (R36285)

Catalog No.	Formulation	Size
R36285-100UG	0.5 mg/ml in 1X TBS, pH7.3, with 0.5% BSA (US sourced) and 0.02% sodium azide	100 ug

[Bulk quote request](#)

Availability	1-3 business days
Species Reactivity	Human, Mouse
Predicted Reactivity	Human
Format	Antigen affinity purified
Host	Goat
Clonality	Polyclonal (goat origin)
Isotype	Goat Ig
Purity	Antigen affinity
Gene ID	2299
Applications	Immunohistochemistry (FFPE) : 2-4ug/ml ELISA (peptide) LOD : 1:32000
Limitations	This FOXI1 antibody is available for research use only.



IHC testing of FFPE human testis with FOXI1 antibody at 2ug/ml. HIER: steamed with pH6 citrate buffer, HRP-staining.

Description

Additional name(s) for this target protein: Forkhead box I1

Application Notes

Optimal dilution of the FOXI1 antibody should be determined by the researcher.

Immunogen

Amino acids TSGVLYPREGTEV were used as the immunogen for this FOXI1 antibody.

Storage

Aliquot and store the FOXI1 antibody at -20oC.