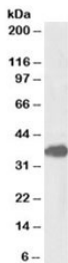


FOXF1 Antibody (R34259)

Catalog No.	Formulation	Size
R34259-100UG	0.5 mg/ml in 1X TBS, pH7.3, with 0.5% BSA (US sourced) and 0.02% sodium azide	100 ug

[Bulk quote request](#)

Availability	1-3 business days
Species Reactivity	Human, Mouse
Predicted Reactivity	Cow, Dog
Format	Antigen affinity purified
Host	Goat
Clonality	Polyclonal (goat origin)
Isotype	Goat Ig
Purity	Antigen affinity
Gene ID	2294
Applications	Western Blot : 1-3ug/ml ELISA (peptide) LOD : 1:128000
Limitations	This FOXF1 antibody is available for research use only.



Western blot testing of mouse lung lysate with FOXF1 antibody at 1ug/ml. Predicted molecular weight: ~40kDa.

Description

Additional name(s) for this target protein: Forkhead box F1

Application Notes

Optimal dilution of the FOXF1 antibody should be determined by the researcher.

Immunogen

Amino acids HQQVTYQDIKPC were used as the immunogen for this FOXF1 antibody.

Storage

Aliquot and store the FOXF1 antibody at -20oC.