

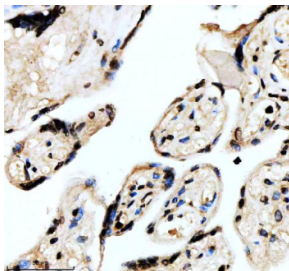
## FOXF1 Antibody / Forkhead box F1 [clone 24F27] (RQ8905)

Catalog No.	Formulation	Size
RQ8905	Antibody in PBS with 0.02% sodium azide, 50% glycerol and 0.4-0.5mg/ml BSA	100 ul

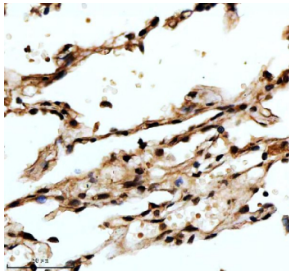
Recombinant **RABBIT MONOCLONAL**

[Bulk quote request](#)

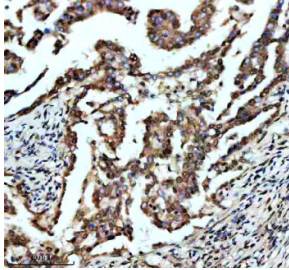
<b>Availability</b>	1-3 days
<b>Species Reactivity</b>	Human
<b>Format</b>	Purified
<b>Host</b>	Rabbit
<b>Clonality</b>	Recombinant Rabbit Monoclonal
<b>Isotype</b>	Rabbit IgG
<b>Clone Name</b>	24F27
<b>Purity</b>	Affinity chromatography
<b>UniProt</b>	Q12946
<b>Localization</b>	Nuclear
<b>Applications</b>	Western Blot : 1:1000 Immunohistochemistry (FFPE) : 1:50
<b>Limitations</b>	This FOXF1 antibody is available for research use only.



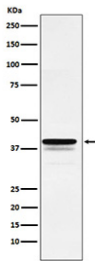
IHC staining of FFPE human placental tissue with FOXF1 antibody, HRP-secondary and DAB substrate. HIER: boil tissue sections in pH8 EDTA for 20 min and allow to cool before testing.



IHC staining of FFPE human lung tissue with FOXF1 antibody, HRP-secondary and DAB substrate. HIER: boil tissue sections in pH8 EDTA for 20 min and allow to cool before testing.



IHC staining of FFPE human lung cancer tissue with FOXF1 antibody, HRP-secondary and DAB substrate. HIER: boil tissue sections in pH8 EDTA for 20 min and allow to cool before testing.



Western blot testing of human HeLa cell lysate with FOXF1 antibody. Predicted molecular weight ~40 kDa.

## Description

Forkhead box F1 (FOXF1) is a transcription factor belonging to the forkhead family, characterized by a conserved DNA-binding forkhead domain. It plays a crucial role in embryonic development, particularly in the formation of the lungs, gastrointestinal tract, and vasculature. FOXF1 regulates gene expression programs essential for mesenchymal cell differentiation and organogenesis.

Mutations or altered expression of FOXF1 have been linked to developmental disorders, such as alveolar capillary dysplasia with misalignment of pulmonary veins, and may also contribute to cancer progression. Research on FOXF1 provides valuable insight into tissue morphogenesis, angiogenesis, and disease mechanisms.

Using a high-quality FOXF1 antibody enables precise detection in applications such as western blot, immunohistochemistry, and immunofluorescence. A FOXF1 antibody from NSJ Bioreagents ensures sensitivity and reproducibility for studies in developmental biology, transcriptional regulation, and pathology. Selecting the right FOXF1 antibody is key to generating consistent and meaningful experimental results.

## Application Notes

Optimal dilution of the FOXF1 antibody should be determined by the researcher.

## Immunogen

A peptide sequence specific to CAMK II protein was used as the immunogen for the FOXF1 antibody.

## Storage

After reconstitution, the FOXF1 antibody can be stored for up to one month at 4°C. For long-term, aliquot and store at

-20oC. Avoid repeated freezing and thawing.