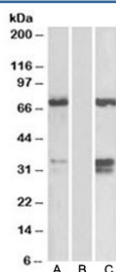


FOXC2 Antibody (R35625)

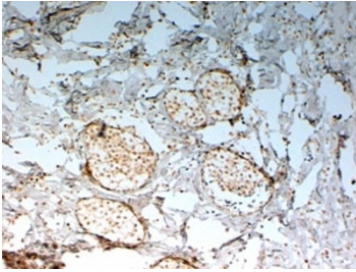
| Catalog No. | Formulation | Size |
|--------------|---|--------|
| R35625-100UG | 0.5 mg/ml in 1X TBS, pH7.3, with 0.5% BSA (US sourced) and 0.02% sodium azide | 100 ug |

[Bulk quote request](#)

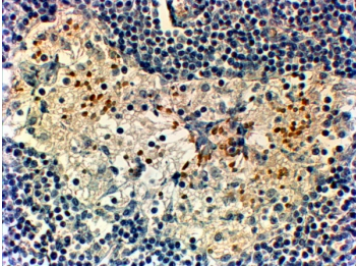
| | |
|----------------------|--|
| Availability | 1-3 business days |
| Species Reactivity | Human |
| Predicted Reactivity | Rat, Dog, Cow |
| Format | Antigen affinity purified |
| Clonality | Polyclonal (goat origin) |
| Isotype | Goat Ig |
| Purity | Antigen affinity |
| Gene ID | 2303 |
| Localization | Nuclear |
| Applications | Western Blot : 0.1-1ug/ml Immunohistochemistry (FFPE) : 2-4ug/ml ELISA (peptide) LOD : 1:16000 |
| Limitations | This FOXC2 antibody is available for research use only. |



Western blot of HEK293 lysate over expressing human FOXC2-FLAG probed with FOXC2 antibody (0.1ug/ml) in Lane A and anti-FLAG (1/1000) in lane C. Mock-transfected HEK293 probed with FOXC2 antibody (1ug/ml) in Lane B. Predicted molecular weight: ~54 kDa.



IHC staining of FFPE human breast cancer with FOXC2 antibody at 2ug/ml. HIER: steamed with pH6 citrate buffer, HRP-staining.



IHC staining of FFPE human breast cancer with FOXC2 antibody at 2ug/ml. HIER: steamed with pH9 Tris/EDTA buffer, HRP-staining.

Description

Additional name(s) for this target protein: Forkhead box C2

Application Notes

Optimal dilution of the FOXC2 antibody should be determined by the researcher.

Immunogen

Amino acids RHAAPYSYDCTKY were used as the immunogen for this FOXC2 antibody.

Storage

Aliquot and store the FOXC2 antibody at -20oC.