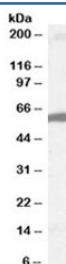


## FOXA2 Antibody (R34150)

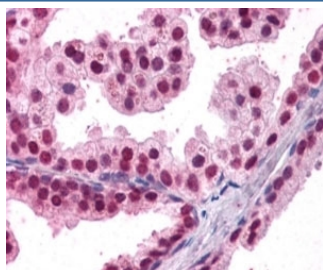
Catalog No.	Formulation	Size
R34150-100UG	0.5 mg/ml in 1X TBS, pH7.3, with 0.5% BSA (US sourced) and 0.02% sodium azide	100 ug

[Bulk quote request](#)

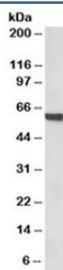
Availability	1-3 business days
Species Reactivity	Human, Rat
Format	Antigen affinity purified
Clonality	Polyclonal (goat origin)
Isotype	Goat Ig
Purity	Antigen affinity
Gene ID	3170
Applications	Western Blot : 1-3ug/ml Immunohistochemistry (FFPE) : 4-8ug/ml ELISA (peptide) LOD : 1:4000
Limitations	This FOXA2 antibody is available for research use only.



Western blot testing of human liver lysate with FOXA2 antibody at 1ug/ml



IHC staining of FFPE human prostate with FOXA2 antibody at 4ug/ml. HIER: steamed with pH6 citrate buffer, AP-staining.



## Description

Additional name(s) for this target protein: Forkhead box A2; HNF3B

## Application Notes

Optimal dilution of the FOXA2 antibody should be determined by the researcher.

## Immunogen

Amino acids GVYSRPIMNSS were used as the immunogen for this FOXA2 antibody.

## Storage

Aliquot and store the FOXA2 antibody at -20°C.