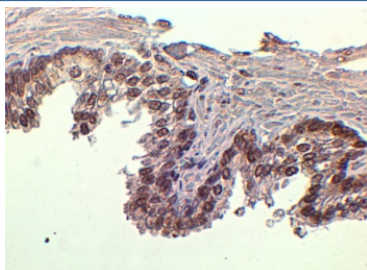


FOXA1 Antibody (R34151)

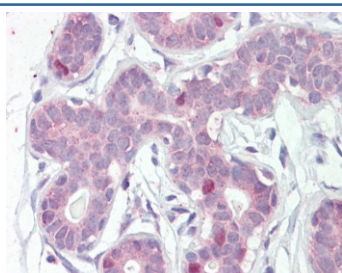
Catalog No.	Formulation	Size
R34151-100UG	0.5 mg/ml in 1X TBS, pH7.3, with 0.5% BSA (US sourced) and 0.02% sodium azide	100 ug

[Bulk quote request](#)

Availability	1-3 business days
Species Reactivity	Human
Predicted Reactivity	Cow, Mouse, Pig, Rat
Format	Antigen affinity purified
Clonality	Polyclonal (goat origin)
Isotype	Goat Ig
Purity	Antigen affinity
Gene ID	3169
Localization	Nuclear
Applications	Immunohistochemistry (FFPE) : 2-5ug/ml ELISA (peptide) LOD : 1:8000
Limitations	This FOXA1 antibody is available for research use only.



IHC staining of FFPE human prostate tissue with FOXA1 antibody at 2ug/ml. HIER: steamed with pH6 citrate buffer, HRP-staining.



IHC staining of FFPE human breast tissue with FOXA1 antibody at 5ug/ml. HIER: steamed with pH6 citrate buffer, AP-staining.

Description

Additional name(s) for this target protein: Forkhead box A1; HNF3A

Application Notes

Optimal dilution of the FOXA1 antibody should be determined by the researcher.

Immunogen

Amino acids GVYSRPVLNTS were used as the immunogen for this FOXA1 antibody.

Storage

Aliquot and store the FOXA1 antibody at -20oC.