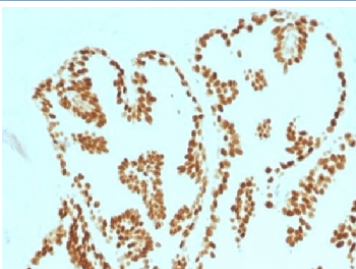


FOXA1 Antibody [clone FOXA1/1515] (V3336)

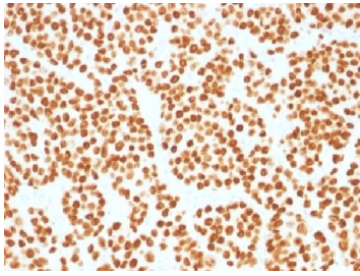
Catalog No.	Formulation	Size
V3336-100UG	0.2 mg/ml in 1X PBS with 0.1 mg/ml BSA (US sourced) and 0.05% sodium azide	100 ug
V3336-20UG	0.2 mg/ml in 1X PBS with 0.1 mg/ml BSA (US sourced) and 0.05% sodium azide	20 ug
V3336SAF-100UG	1 mg/ml in 1X PBS; BSA free, sodium azide free	100 ug

[Bulk quote request](#)

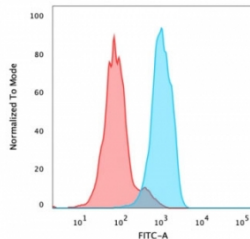
Species Reactivity	Human
Format	Purified
Host	Mouse
Clonality	Monoclonal (mouse origin)
Isotype	Mouse IgG1, kappa
Clone Name	FOXA1/1515
Purity	Protein G affinity chromatography
Buffer	1X PBS, pH 7.4
UniProt	P55317
Gene ID	3169
Localization	Nuclear
Applications	Immunohistochemistry (FFPE) : 0.5-1ug/ml for 30 min at RT Western Blot : 1-2ug/ml Flow Cytometry : 0.5-1ug/ml
Limitations	This FOXA1 antibody is available for research use only.



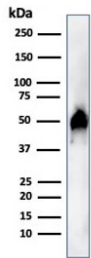
IHC testing of FFPE human prostate carcinoma with FOXA1 antibody (clone FOXA1/1515). HIER: boil sections in 10mM Tris with 1mM EDTA, pH9, for 10-20 min.



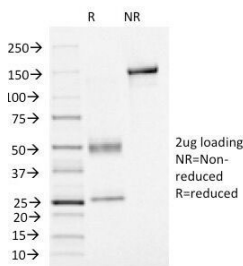
IHC testing of FFPE human prostate carcinoma with FOXA1 antibody (clone FOXA1/1515). HIER: boil sections in 10mM Tris with 1mM EDTA, pH9, for 10-20 min.



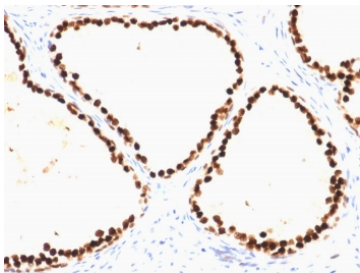
FACS testing of PFA-fixed human MCF-7 cells with FOXA1 antibody (clone FOXA1/1515); Red=isotype control, Blue= FOXA1 antibody.



Western blot testing of human HeLa cell lysate with FOXA1 antibody (clone FOXA1/1515). Predicted molecular weight: ~49 kDa.



SDS-PAGE Analysis of Purified, BSA-Free FOXA1 Antibody (clone FOXA1/1515). Confirmation of Integrity and Purity of the Antibody.



IHC testing of FFPE human prostate carcinoma with FOXA1 antibody (clone FOXA1/1515). HIER: boil sections in 10mM Tris with 1mM EDTA, pH9, for 10-20 min.

Description

The transcription factor Forkhead-box A1 (FOXA1), also known as hepatocyte nuclear factor 3-alpha, is a member of the FOX class of transcription factors. HNF-1 (HNF-1A and HNF-1B), HNF-3 (HNF-3A, HNF-3B and HNF-3C), HNF-4 (HNF-4A and HNF-4B), and HNF-6 compose, in part, a homeoprotein family designated the hepatocyte nuclear factor family. The various HNF-1 isoforms regulate transcription of genes in the liver as well as in other tissues such as kidney, small intestine and thymus. FOXA1 is expressed in normal breast ductal epithelium and other epithelium in different organs, such as lung, pancreas, bladder, prostate, and colon. Recently, FOXA1 has been shown to be a major determinant of estrogen-ER activity and endocrine response in breast cancer cells. FOXA1 expression correlates with estrogen receptor (ER)-positivity, especially

in luminal subtype A breast cancers, which is associated with favorable prognosis. FOXA1 is useful in the sub-classification of breast carcinomas.

Learn more about FOXA1 function in developmental gene regulation, organogenesis, epithelial differentiation, and tissue-specific transcriptional control on our [FOXA1 Antibody](#) page.

Application Notes

The concentration stated for each application is a general starting point. Variations in protocols, secondaries and substrates may require the FOXA1 antibody to be titered up or down for optimal performance.

Immunogen

A human partial recombinant protein corresponding to amino acids 372-472 was used as the immunogen for this FOXA1 antibody.

Storage

Store the FOXA1 antibody at 2-8oC (with azide) or aliquot and store at -20oC or colder (without azide).

References (1)