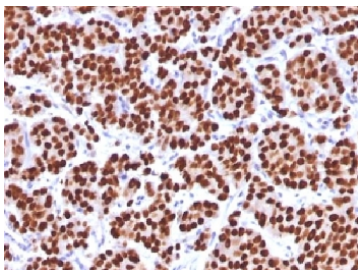


FOXA1 Antibody [clone FOXA1/1512] (V3292)

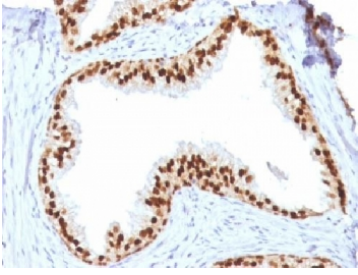
Catalog No.	Formulation	Size
V3292-100UG	0.2 mg/ml in 1X PBS with 0.1 mg/ml BSA (US sourced) and 0.05% sodium azide	100 ug
V3292-20UG	0.2 mg/ml in 1X PBS with 0.1 mg/ml BSA (US sourced) and 0.05% sodium azide	20 ug
V3292SAF-100UG	1 mg/ml in 1X PBS; BSA free, sodium azide free	100 ug

[Bulk quote request](#)

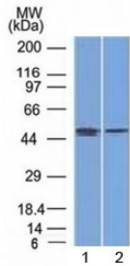
Species Reactivity	Human
Format	Purified
Host	Mouse
Clonality	Monoclonal (mouse origin)
Isotype	Mouse IgG1, kappa
Clone Name	FOXA1/1512
Purity	Protein G affinity chromatography
Buffer	1X PBS, pH 7.4
UniProt	P55317
Gene ID	3169
Localization	Nuclear
Applications	Flow Cytometry : 0.5-1ug/10 ⁶ cells Immunofluorescence : 0.5-1ug/ml Western Blot : 0.5-1ug/ml Immunohistochemistry (FFPE) : 1-2ug/ml for 30 min at RT
Limitations	This FOXA1 antibody is available for research use only.



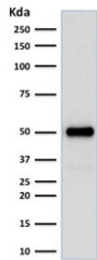
IHC testing of FFPE human prostate carcinoma with FOXA1 antibody (clone FOXA1/1512). HIER: boil sections in 10mM Tris with 1mM EDTA, pH9, for 10-20 min.



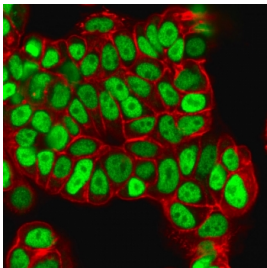
IHC testing of FFPE human prostate with FOXA1 antibody (clone FOXA1/1512). HIER: boil sections in 10mM Tris with 1mM EDTA, pH9, for 10-20 min.



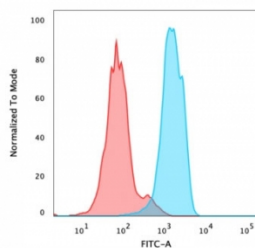
Western blot testing of human 1) MCF7 (breast) and 2) PC3 (prostate) cell lysate with FOXA1 antibody (clone FOXA1/1512). Predicted molecular weight: ~49 kDa.



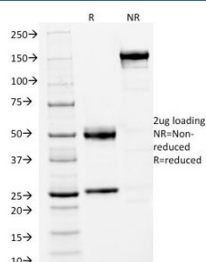
Western blot testing of human HeLa cell lysate with FOXA1 antibody (clone FOXA1/1512). Predicted molecular weight: ~49 kDa.



Immunofluorescent staining of PFA-fixed human MCF7 cells with FOXA1 antibody (clone FOXA1/1512, green) and Phalloiden (red).



FACS testing of PFA-fixed human MCF-7 cells with FOXA1 antibody (clone FOXA1/1512); Red=isotype control, Blue= FOXA1 antibody.



SDS-PAGE Analysis of Purified, BSA-Free FOXA1 Antibody (clone FOXA1/1512). Confirmation of Integrity and Purity of the Antibody.

Description

FOXA1 is a member of the forkhead class of DNA-binding proteins. These hepatocyte nuclear factors are transcriptional activators for liver-specific transcripts such as albumin and transthyretin, and they also interact with chromatin as a pioneer factor. Similar family members in mice have roles in the regulation of metabolism and in the differentiation of the pancreas and liver.

FOXA1 in breast cancer is highly correlated with ER⁺, GATA3⁺, and PR⁺ protein expression as well as endocrine signaling. FOXA1 acts as a pioneer factor for ER α in ER⁺ breast cancer, and its expression might identify ER⁺ cancers that undergo rapid reprogramming of ER α signaling that is associated with poor outcomes and treatment resistance. Conversely, in ER⁻ breast cancer FOXA1 is highly correlated with low-grade morphology and improved disease free survival. FOXA1 is a downstream target of GATA3 in the mammary gland. Expression in ER⁻ cancers may identify a subset of tumors that is responsive to other endocrine therapies such as androgen receptor antagonist treatment. [Wiki]

Learn more about FOXA1 function in developmental gene regulation, organogenesis, epithelial differentiation, and tissue-specific transcriptional control on our [FOXA1 Antibody](#) page.

Application Notes

Optimal dilution of the FOXA1 antibody should be determined by the researcher.

Immunogen

A human partial recombinant protein corresponding to amino acids 372-472 was used as the immunogen for this FOXA1 antibody.

Storage

Store the FOXA1 antibody at 2-8°C (with azide) or aliquot and store at -20°C or colder (without azide).

References (1)