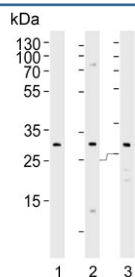


FOLR2 Antibody / Folate Receptor beta (F54245)

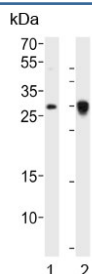
Catalog No.	Formulation	Size
F54245-0.4ML	In 1X PBS, pH 7.4, with 0.09% sodium azide	0.4 ml
F54245-0.08ML	In 1X PBS, pH 7.4, with 0.09% sodium azide	0.08 ml

[Bulk quote request](#)

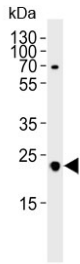
Availability	1-3 business days
Species Reactivity	Human, Mouse
Format	Purified
Host	Rabbit
Clonality	Polyclonal (rabbit origin)
Isotype	Rabbit Ig
Purity	Antigen affinity purified
UniProt	P14207
Gene ID	2350
Applications	Western Blot : 1:1000 Immunohistochemistry (FFPE) : 1:25-1:50
Limitations	This FOLR2 antibody is available for research use only.



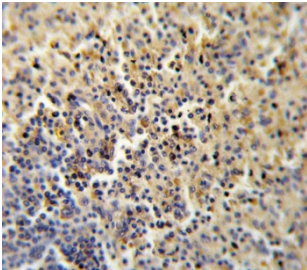
Western blot testing of human 1) KG-1, 2) MCF7 and 3) MDA-MB-453 cell lysate with FOLR2 antibody. Predicted molecular weight ~29 kDa.



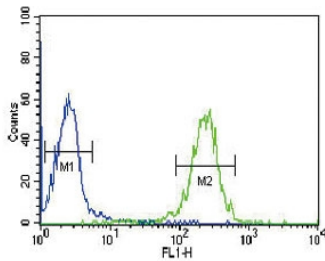
Western blot testing of human 1) MDA-MB-453 and 2) placenta lysate with FOLR2 antibody. Predicted molecular weight ~29 kDa.



Western blot testing of mouse heart lysate with FOLR2 antibody. Predicted molecular weight ~29 kDa.



IHC testing of FFPE human spleen tissue with FOLR2 antibody. HIER: steam section in pH6 citrate buffer for 20 min and allow to cool prior to staining.



Flow cytometry testing of human HL60 cells with FOLR2 antibody; Blue=isotype control, Green= FOLR2 antibody.

Description

FOLR2 is a member of the folate receptor (FOLR) family, and these genes exist in a cluster on chromosome 11. Members of this gene family have a high affinity for folic acid and for several reduced folic acid derivatives, and they mediate delivery of 5-methyltetrahydrofolate to the interior of cells. This protein has a 68% and 79% sequence homology with the FOLR1 and FOLR3 proteins, respectively. Although this protein was originally thought to be specific to placenta, it can also exist in other tissues, and it may play a role in the transport of methotrexate in synovial macrophages in rheumatoid arthritis patients.

Application Notes

The stated application concentrations are suggested starting points. Titration of the FOLR2 antibody may be required due to differences in protocols and secondary/substrate sensitivity.

Immunogen

A portion of amino acids 18-46 from the human protein were used as the immunogen for the FOLR2 antibody.

Storage

Aliquot the FOLR2 antibody and store frozen at -20°C or colder. Avoid repeated freeze-thaw cycles.

