

## Follistatin like-3 Antibody / FSTL3 (F54645)

Catalog No.	Formulation	Size
F54645-0.4ML	In 1X PBS, pH 7.4, with 0.09% sodium azide	0.4 ml
F54645-0.08ML	In 1X PBS, pH 7.4, with 0.09% sodium azide	0.08 ml

[Bulk quote request](#)

<b>Availability</b>	1-3 business days
<b>Species Reactivity</b>	Human
<b>Format</b>	Purified
<b>Host</b>	Rabbit
<b>Clonality</b>	Polyclonal (rabbit origin)
<b>Isotype</b>	Rabbit Ig
<b>Purity</b>	Antigen affinity purified
<b>UniProt</b>	O95633
<b>Localization</b>	Nuclear
<b>Applications</b>	Western Blot : 1:500-1:2000 Immunohistochemistry (FFPE) : 1:25
<b>Limitations</b>	This Follistatin like-3 antibody is available for research use only.

kDa  
95  
72  
55  
36  
28  
17

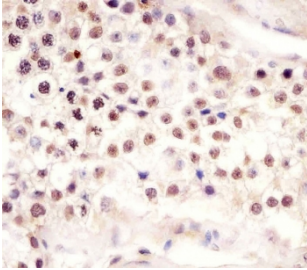
Western blot testing of human CCRF-CEM cell lysate with Follistatin like-3 antibody.  
Expected molecular weight: 25-39 kDa depending on glycosylation level.

kDa  
95  
72  
55  
36  
28  
17

Western blot testing of human HepG2 cell lysate with Follistatin like-3 antibody.  
Expected molecular weight: 25-39 kDa depending on glycosylation level.

kDa  
95 -  
72 -  
55 -  
36 -  
28 -  
17 -  
10 -

Western blot testing of human A431 cell lysate with Follistatin like-3 antibody. Expected molecular weight: 25-39 kDa depending on glycosylation level.



IHC testing of FFPE human testis tissue with Follistatin like-3 antibody. HIER: steam section in pH6 citrate buffer for 20 min and allow to cool prior to staining.

## Description

Follistatin-like 3 is a secreted glycoprotein of the follistatin-module-protein family. It may have a role in leukemogenesis.

## Application Notes

The stated application concentrations are suggested starting points. Titration of the Follistatin like-3 antibody may be required due to differences in protocols and secondary/substrate sensitivity.

## Immunogen

A portion of amino acids 229-258 from the human protein was used as the immunogen for the Follistatin like-3 antibody.

## Storage

Aliquot the Follistatin like-3 antibody and store frozen at -20oC or colder. Avoid repeated freeze-thaw cycles.